

VENTURA COUNTY PUBLIC WORKS AGENCY WATERSHED PROTECTION

ZONE 2

SATICOY PARK STORMWATER CAPTURE AND GROUNDWATER RECHARGE IN UNINCORPORATED VENTURA COUNTY

INDEX OF SHEETS

SHEET No	TITLE
1	TITLE SHEET
2	SITE PLAN
3	STORM DRAIN LINE A - PLAN & PROFILE
4	STORM DRAIN LINE B - PLAN & PROFILE
5	DETAILS
6	DETAILS
7	DETAILS
8	DETAILS
9	DETAILS
10	DETAILS

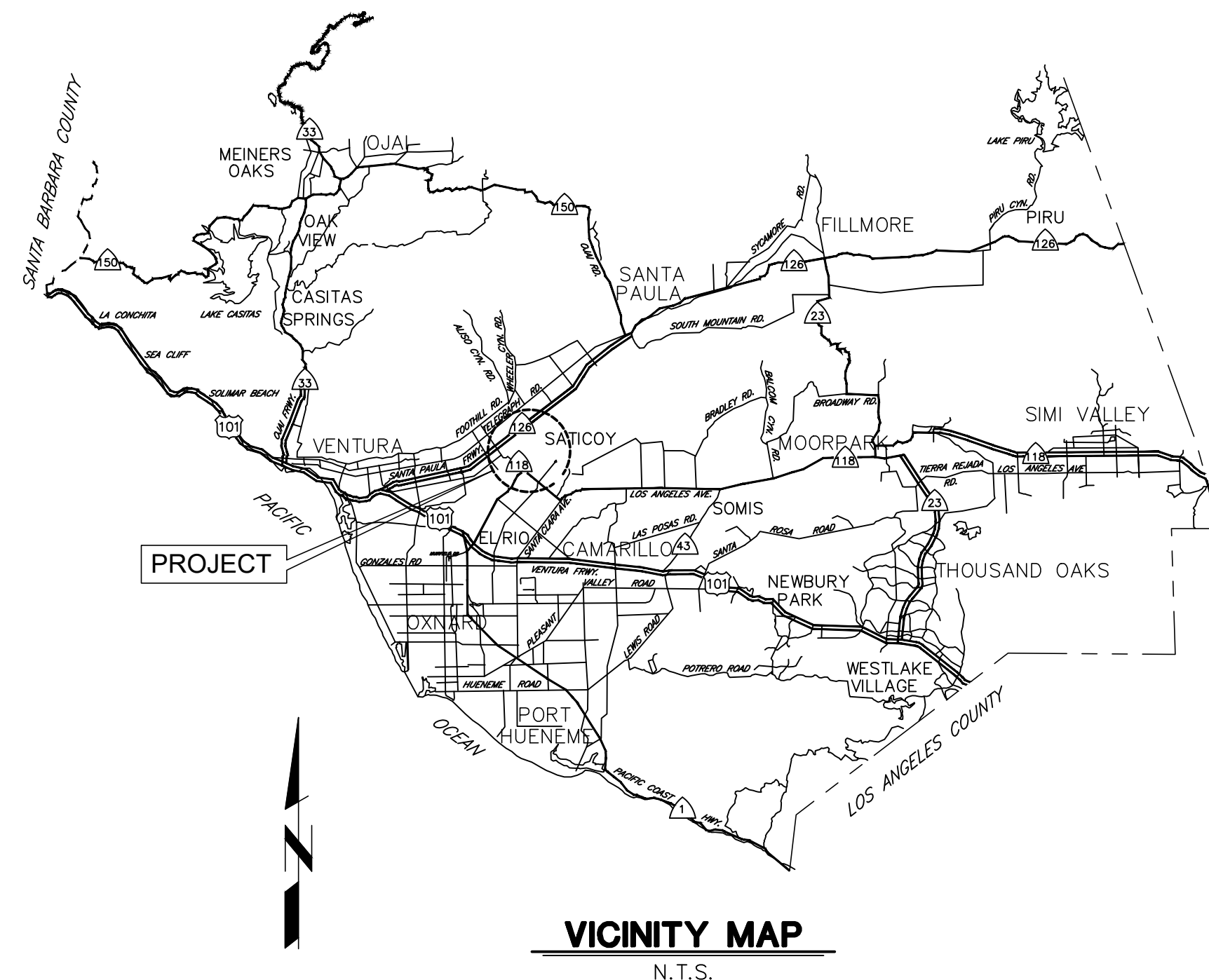
INDEX OF STANDARD PLANS USED BY REFERENCE

SPPWC STANDARD PLANS, 2021 EDITION:

133-3	AC PAVEMENT REPLACEMENT
204-2	CLEANOUT
320-1	MANHOLE
324-2	MANHOLE SHAFT

COUNTY OF VENTURA PUBLIC WORKS ROAD STANDARDS

E-11	PAVEMENT REPAIRS FOR TRENCHING
------	--------------------------------



VICINITY MAP
N.T.S.

GENERAL NOTES

- ELEVATIONS SHOWN ARE IN US FEET, NATIONAL AMERICAN VERTICAL DATUM OF 1988.
- STATIONS SHOWN ON DRAWINGS ARE ALONG CENTERLINE OF PROPOSED STORM DRAIN.
- E.G.L. AND H.G.L. WILL BE PROVIDED IN FINAL ENGINEERING FOR FUTURE REFERENCE BY THE DISTRICT ONLY.
- NUMBERS IN \ominus INDICATE BID ITEMS FOR WHICH PAYMENT WILL BE MADE.
- LETTER AND NUMBER IN \ominus INDICATE THE DETAIL CALL-OUT AND SHEET ON WHICH REFERENCE DETAIL IS SHOWN.
- NUMBERS IN \triangle REFER TO NOTES ON SAME SHEET UNLESS OTHERWISE NOTED.
- TREES DESIGNATED BY \oplus SHALL BE REMOVED. ALL OTHER TREES SHALL BE PROTECTED IN PLACE UNLESS INDICATED OTHERWISE.
- DELINEATES LIMITS OF VENTURA COUNTY RIGHT OF WAY.
- DELINEATES LIMITS OF TEMPORARY WORK AREA.

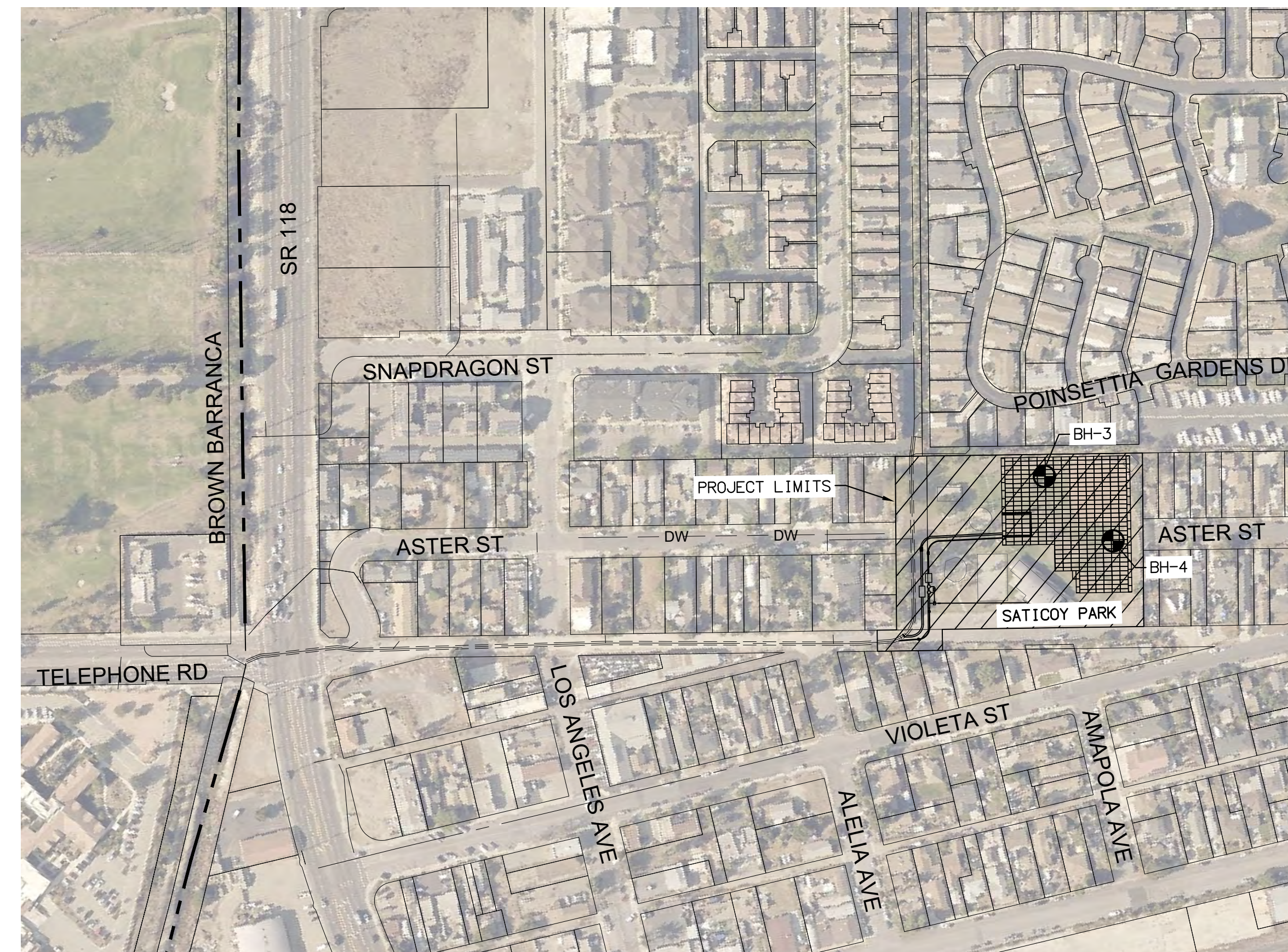
TOPOGRAPHY AND CROSS SECTIONS FOR THIS PROJECT WERE TAKEN FROM THE AERIAL TOPOGRAPHY OF PARCEL 090-0-101-015 INCLUDED IN THE AS-BUILT OF THE NEW SATICOY FACILITY, DATED 02/23/2021.

- SYMBOL \blacktriangle INDICATES THE LOCATION OF HORIZONTAL AND VERTICAL CONTROL POINTS WHICH WILL BE FURNISHED BY THE AGENCY FOR CONSTRUCTION USE.

SURVEY CONTROL POINTS

PT XXX	NORTHING/Y: 1,911,567.341	EASTING/X: 6,211,045.479	ELEV/Z: 93.148
PT XXX	NORTHING/Y: 1,911,952.172	EASTING/X: 6,211,396.378	ELEV/Z: 93.641

- SOIL TEST BORINGS SHOWN FOR THE PROJECT WERE MADE ON AUGUST 11, 2022 AND THEIR LOCATION IS MARKED BY THE SYMBOL \bullet . REFER TO THE SPECIFICATIONS FOR ADDITIONAL GEOTECHNICAL REPORT INFORMATION. SUBSURFACE SOIL INVESTIGATION RESULTS ARE FURNISHED FOR INFORMATION ONLY IN ACCORDANCE WITH SUBSECTION 2-7 OF THE STANDARD SPECIFICATIONS, AND NO WARRANTY IS MADE THEREFOR.
- EXISTING IMPROVEMENTS WITHIN THE RIGHT OF WAY AND WORK AREAS SHALL REMAIN AND SHALL BE PROTECTED UNLESS OTHERWISE NOTED. DAMAGED IMPROVEMENTS SHALL BE REPLACED IN KIND TO A CONDITION EQUAL TO OR BETTER THAN THAT WHICH EXISTED PRIOR TO CONSTRUCTION.
- UTILITIES ARE SHOWN AS KNOWN TO EXIST AT TIME OF SURVEY. UTILITIES MAY HAVE BEEN OMITTED, MISPLACED, AND/OR RELOCATED. CONTRACTOR SHALL EXERCISE CARE IN EXCAVATION AND SHALL PROTECT ALL UTILITIES.
- CONTRACTOR SHALL NOTIFY UTILITY OWNERS A MINIMUM OF 48 HOURS PRIOR TO STARTING WORK IN AREAS AFFECTING THEIR FACILITIES.



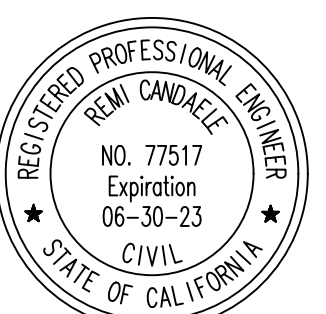
UNDERGROUND SERVICE ALERT

1-800-422-4133
CALL USA/SC
FOR UNDERGROUND LOCATION
2 WORKING DAYS BEFORE YOU DIG

GENERAL PLAN

100 50 0 100 200
SCALE OF FEET

**30% DESIGN
NOT FOR CONSTRUCTION**



REVISION	DESCRIPTION	APP.	DATE
A	ISSUED FOR FEASIBILITY STUDY		12-19-22

PREPARED BY:
Q3 Consulting
 27042 TOWNE CENTRE DRIVE, SUITE 110
 FOOTHILL RANCH, CA 92610
 949-259-6770

DESIGNED	CT	WATERSHED PROJECT MANAGER	DATE
DRAWN	CT	WATERSHED DEPUTY DIRECTOR	DATE
CHECKED	RC	WATERSHED DIRECTOR	DATE

**VENTURA COUNTY
PUBLIC WORKS AGENCY
WATERSHED PROTECTION**

SPEC. NO.	N/A
PROJ. NO.	N/A

**SATICOY PARK STORMWATER CAPTURE AND
GROUNDWATER RECHARGE**
TITLE SHEET

SHEET	1
OF	10
DRAWING NO.	WP-?-???



SITE PLAN

CONSTRUCTION NOTES		UNIT	ESTIMATED QUANTITY
1	CONSTRUCT 36" RCP. PIPE INSTALLATION, TRENCHING AND PAVEMENT REPAIR PER COUNTY OF VENTURA ROAD STANDARD PLATE E-11	LF	335
2	CONSTRUCT 12" CLASS 315 PVC SCHEDULE 80 WITH MARKINGS & FITTINGS. INCLUDES BENDS, FITTINGS, AND OTHER APPURTENANCES. PIPE INSTALLATION, TRENCHING AND PAVEMENT REPAIR PER COUNTY OF VENTURA ROAD STANDARD PLATE E-11	LF	320
3	MOBILIZATION, TRAFFIC CONTROL, AND MISCELLANEOUS REPAIR	LS	1
4	INSTALL CONTECH DSBB-10-20-108 DUAL STAGE HYDRODYNAMIC SEPARATOR OR APPROVED EQUIVALENT. CONSTRUCT 4" DIAM. WICKS/WEEPHOLES AT 12" O.C. AT VAULT BOTTOM FOR INTRINSIC INFILTRATION.	EA	1
5	INSTALL 1,000 GPM, 25' TPH PUMP VAULT PER DETAIL ON SHEET 7. INCLUDES PUMPS, SENSORS, AND ACCESS HATCH.	EA	1
6	INSTALL 1,000 GPM UV TREATMENT PER DETAIL ON SHEET 7	EA	1
7	INSTALL 350,500 CF DETENTION CHAMBER PER DETAIL ON SHEETS 8-10. AVOID CONFLICT WITH EXISTING STRUCTURES.	EA	1
8	INSTALL 60,000 SF GEOHYDRAULIC INFILTRATION TUBING PER DETAIL ON SHEET 7. LAYOUT PER FINAL ENGINEERING	SF	60,000
9	INSTALL CONTECH KF-11-16 MEMBRANE FILTRATION SYSTEM WITH PRETREATMENT (OR APPROVED EQUIVALENT) PER DETAIL ON SHEET 6. CONSTRUCT 4" DIAM. WICKS/WEEPHOLES AT 12" O.C. AT VAULT BOTTOM FOR INTRINSIC INFILTRATION.	EA	1
10	INSTALL ELECTRICAL CONDUIT PENETRATION TO BUILDING AND WIRE CONDUIT TO ELECTRICAL ROOM. CONNECT TO EXISTING 208V/3PH PANEL. IMPROVEMENTS PER CBC.	EA	1
11	CONSTRUCT 8" CLASS 315 PVC SCHEDULE 80 WITH MARKINGS & FITTINGS. INCLUDES BENDS, FITTINGS, AND OTHER APPURTENANCES	LF	16
12	INSTALL 12" X 12" X 18"D ELECTRICAL JUNCTION BOX	EA	2
13	INSTALL FLOOR MOUNT NEMA 4X ENCLOSURE WITH INTERNAL CONTROLS AND PANEL INTERFACE OF UV FILTRATION SYSTEM AND WET WELL PER DETAIL ON SHEET 10	EA	1
14	PROVIDE NEW CIRCUITS IN 2" SCHEDULE 40 PVC. TRENCH AT 24" MIN BELOW GROUND. 208V/3 PHASE TO POWER WET WELL AND UV FILTRATION SYSTEM. LOW VOLTAGE CIRCUIT TO POWER SENSORS AND CONTROLS. WIRE SIZE PER MANUFACTURER. REPAIR TRENCHING PER COUNTY OF VENTURA ROAD STANDARD PLATE E-11.	LF	230
15	RESTORE LANDSCAPING IN KIND	LS	1
16	REPLACE IN KIND 8FT HIGH CHAIN LINK FENCE FROM POLE TO POLE DAMAGED DURING CONSTRUCTION	LF	492
17	REPAIR BASEBALL INFIELD, OUTFIELD, CLAY WARNING TRACK, PITCHER MOUND AND BULLPEN AREA	LS	1
18	CONSTRUCT 36" MANHOLE PER SPPWC STD PLAN 320-2	EA	1
19	CONSTRUCT 12" CLEANOUT PER SPPWC STD PLAN 204-2.	EA	1
20	CONSTRUCT STORM DRAIN DIVERSION PER DETAIL ON SHEET 5	EA	1
21	CONSTRUCT SEDIMENT TRAP AND LOW-FLOW NOTCH PER DETAIL ON SHEET 5	EA	1
22	INSTALL 12" INLINE SWING CHECK VALVE	EA	2
23	INSTALL FLAP GATE PER DETAIL ON SHEET 10	EA	1
24	INSTALL VALVE VAULT PER DETAIL ON SHEET 7	EA	1
25	CONSTRUCT 4"AC OVER 4"AB PER SPPWC STD 133-3. JOIN EXISTING.	SF	5,300
26	REPAIR SIGNING AND STRIPING IN KIND	LS	1

ABBREVIATIONS

AC	ASPHALTIC CONCRETE	MB	MAIL BOX
ASTM	AMERICAN SOCIETY FOR TESTING & MATERIALS	MIN	MINIMUM
CB	CATCH BASIN	PVC	POLYVINYL CHLORIDE
CD	CURB DRAIN	PP	POWER POLE
CF	CURB FACE	PPA	POWER POLE ANCHOR
C/L OR CL	CENTERLINE	R	RADIUS
CO	CLEANOUT	R/W	RIGHT OF WAY
CONC	CONCRETE	S	SEWER
CP	CONTROL POINT	SD	STORM DRAIN
CRB	CURB	SDMH	STORM DRAIN MANHOLE
DH	DRILL HOLE	SHT	SHEET
DIA	DIAMETER	SMH	SEWER MANHOLE
DRWY	DRIVEWAY	SP	SIGN POST
ELEV	ELEVATION	SPPWC	STANDARD PLANS FOR PUBLIC WORKS CONSTRUCTION
EX	EXISTING	SQ	SQUARE
FG	FINISH GRADE	STD	STANDARD
FH	FIRE HYDRANT	TC	TOP OF CURB
FL	FLOW LINE	TOT	TOTAL
FNC	FENCE	TR	TREE
G	GAS	TYP	TYPICAL
GV	GAS VALVE	V	VERTICAL HEIGHT
INV	INVERT OR FLOW LINE OF PIPE	W	WATER
L	LENGTH	WM	WATER METER
L.F.	LINEAR FEET	WV	WATER VALVE
MAX	MAXIMUM		

**30% DESIGN
NOT FOR CONSTRUCTION**



PLOT DATE: 12/17/22

REVISION	DESCRIPTION	APP.	DATE
A	ISSUED FOR FEASIBILITY STUDY		12-19-22

PREPARED BY:
Q3 Consulting
 27042 TOWNE CENTRE DRIVE, SUITE 110
 FOOTHILL RANCH, CA 92610
 949-259-6770

DESIGNED	CT	WATERSHED PROJECT MANAGER	DATE
DRAWN	CT	WATERSHED DEPUTY DIRECTOR	DATE
CHECKED	RC	WATERSHED DIRECTOR	DATE

**VENTURA COUNTY
PUBLIC WORKS AGENCY
WATERSHED PROTECTION**

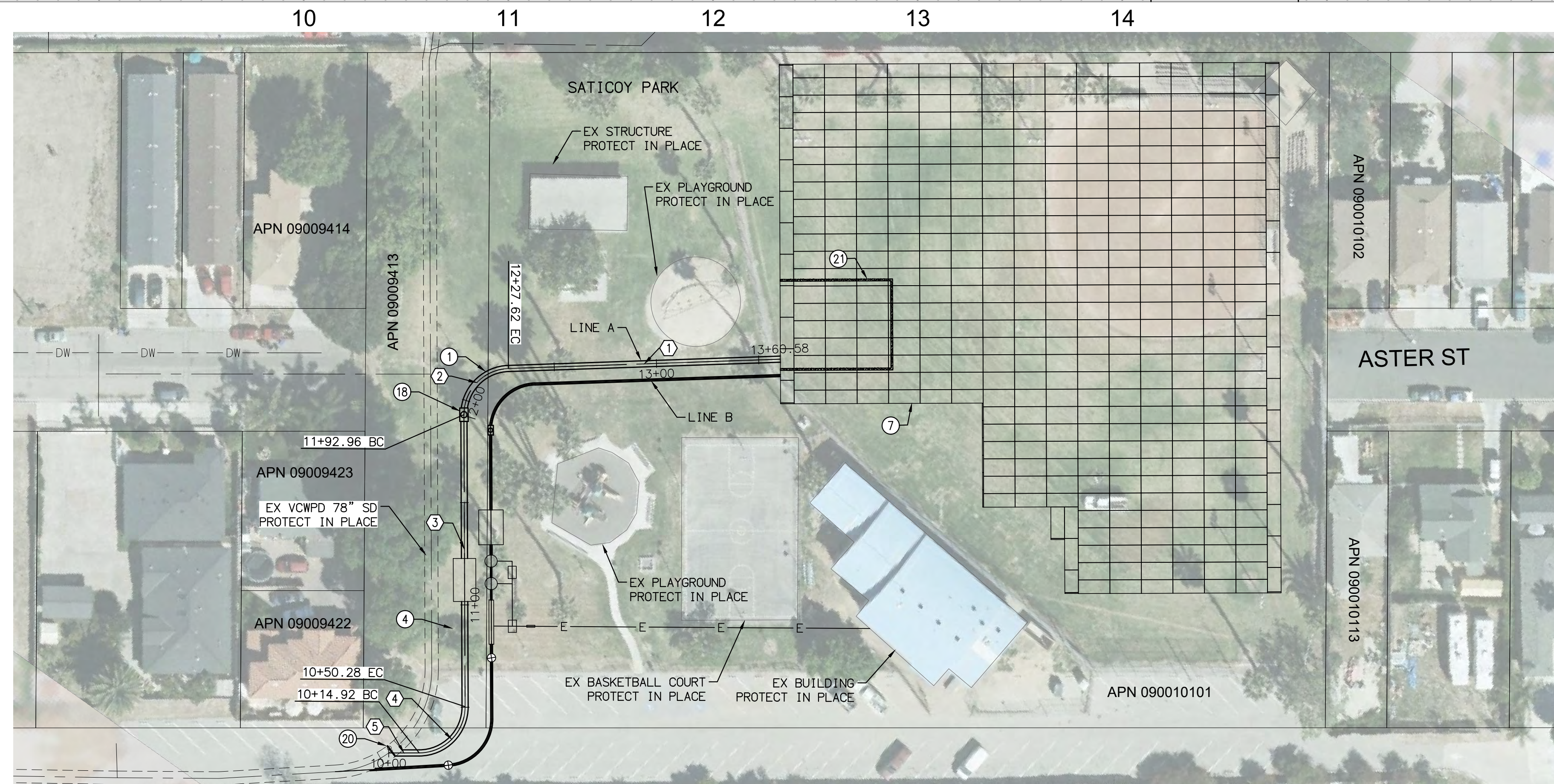
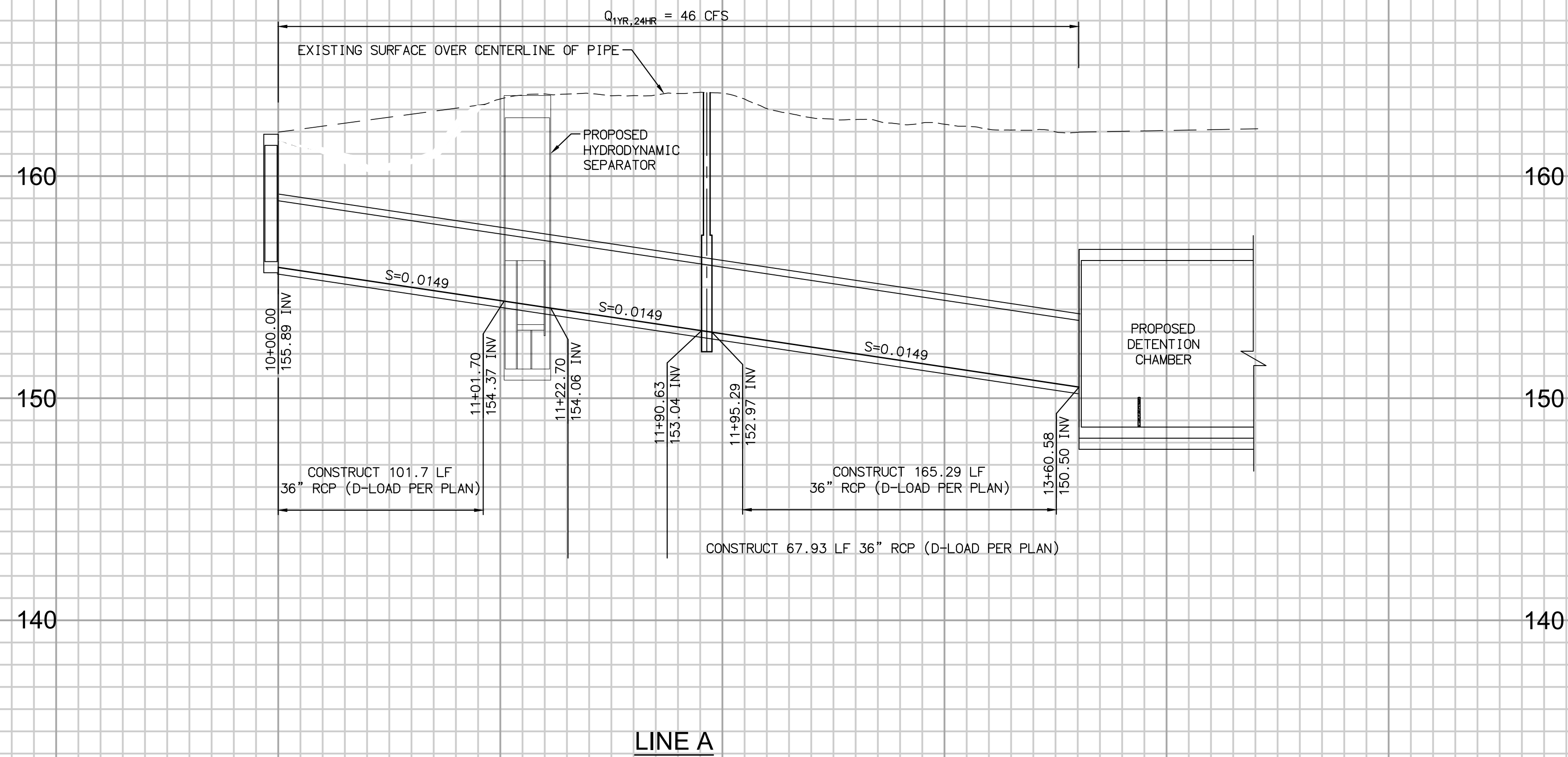
SPEC. NO.	N/A
PROJ. NO.	N/A

**SATICOY PARK STORMWATER CAPTURE AND
GROUNDWATER RECHARGE**

SITE PLAN

SHEET	2
OF	10
DRAWING NO.	WP-?-???

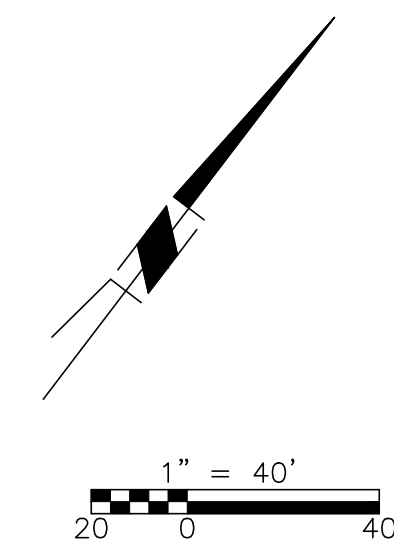
N:\40,085,000\DLV\PLANS\IMP\SD\SATICOY\085-SD-INDX.DWG PLOTTED: Dec 17, 2022 - 1:57pm BY: CANDACE TONG



CONSTRUCTION NOTES

- ① CONSTRUCT 36" RCP. PIPE INSTALLATION, TRENCHING AND PAVEMENT REPAIR PER COUNTY OF VENTURA ROAD STANDARD PLATE E--11
- ④ INSTALL CONTECH DSBB-10-20-108 DUAL STAGE HYDRODYNAMIC SEPARATOR OR APPROVED EQUIVALENT. CONSTRUCT 4" DIAM. WICKS/WEEPHOLES AT 12" O.C. AT VAULT BOTTOM FOR INTRINSIC INFILTRATION.
- ⑦ INSTALL 350,500 CF DETENTION CHAMBER PER DETAIL ON SHEETS 8-10. AVOID CONFLICT WITH EXISTING STRUCTURES.
- ⑱ CONSTRUCT 36" MAN-HOLE PER SPPWC STD PLAN 320-2
- ⑳ CONSTRUCT STORM DRAIN DIVERSION PER DETAIL ON SHEET 5
- ㉑ CONSTRUCT SEDIMENT TRAP AND LOW-FLOW NOTCH PER DETAIL ON SHEET 5

LINE/CURVE DATA TABLE				
NO	BEARING/DELTA	RADIUS	LENGTH	TANGENT
1	N52°39'58"E	---	132.96'	---
2	88°15'47"	22.50'	34.66'	21.83'
3	N35°35'49"W	---	142.68'	---
4	90°02'23"	22.50'	35.36'	22.52'
5	N54°26'34"E	---	14.92'	---



30% DESIGN
NOT FOR CONSTRUCTION



D			
C			
B			
A	ISSUED FOR FEASIBILITY STUDY	12-19-22	
△	REVISION	DESCRIPTION	APP. DATE

PREPARED BY:

Q3 Consulting
27042 TOWNE CENTRE DRIVE, SUITE 110
FOOTHILL RANCH, CA 92610
949-259-6770

CT	DESIGNED	WATERSHED PROJECT MANAGER	DATE
CT	DRAWN	WATERSHED DEPUTY DIRECTOR	DATE
RC	CHECKED	WATERSHED DIRECTOR	DATE

VENTURA COUNTY
PUBLIC WORKS AGENCY
WATERSHED PROTECTION

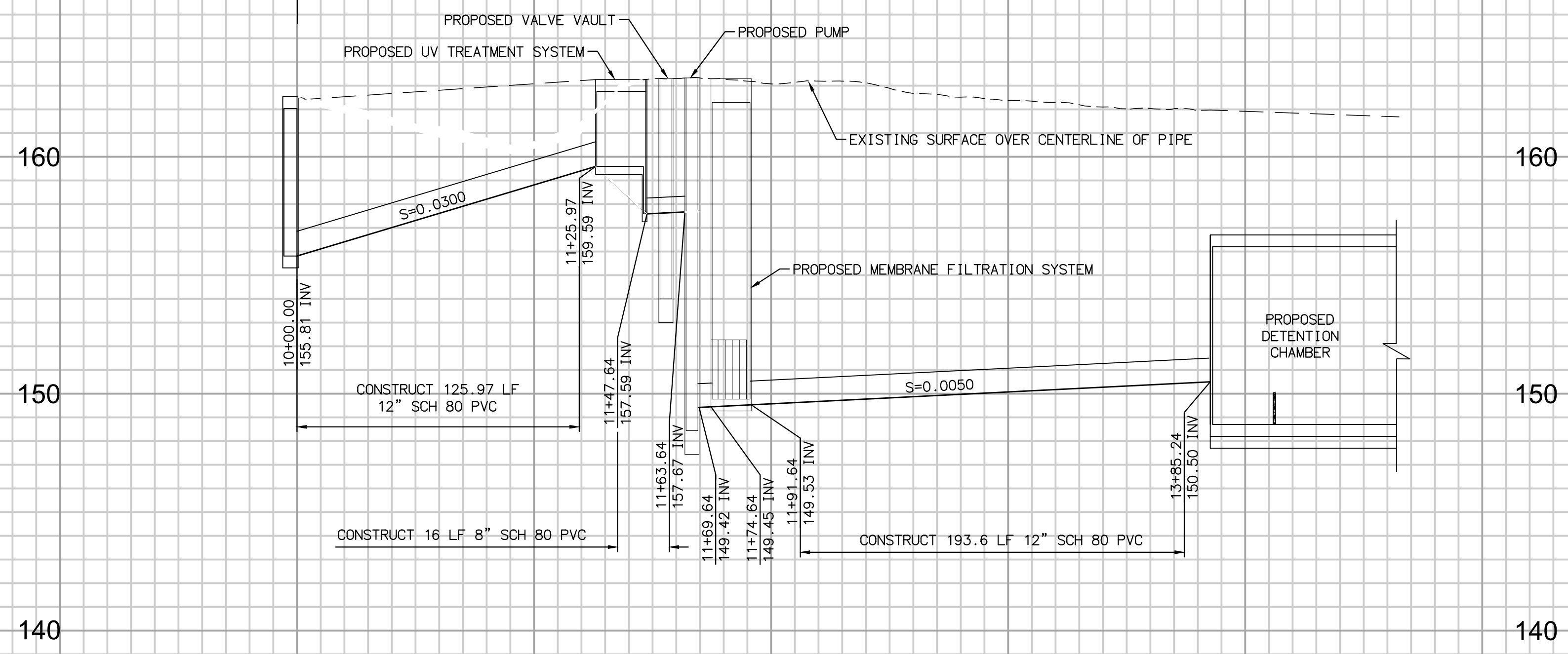
SPEC. NO.	N/A
PROJ. NO.	N/A

SATICOY PARK STORMWATER CAPTURE AND
GROUNDWATER RECHARGE
STORM DRAIN LINE A - PLAN & PROFILE

SHEET	3
OF	10
DRAWING NO.	WP-?-???

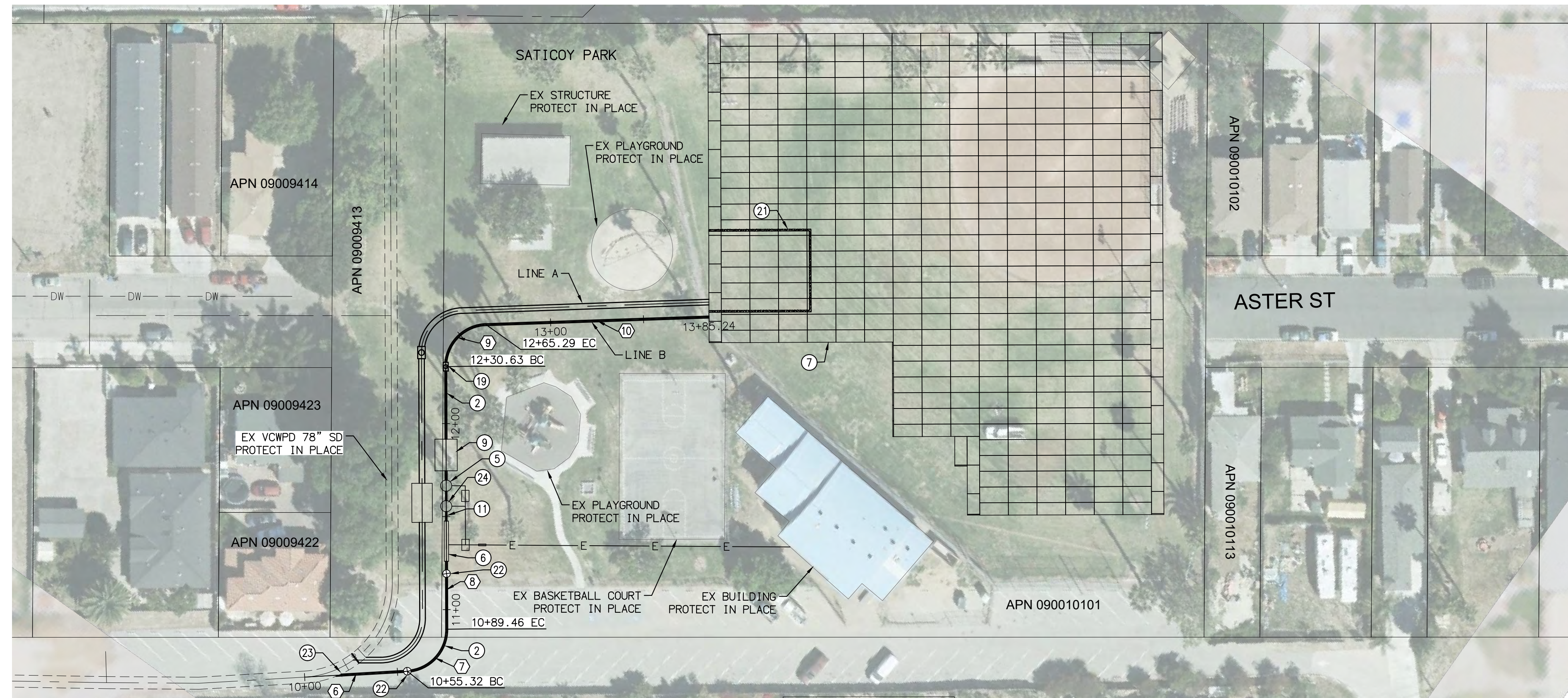
PLOT DATE: 12/17/22

N:\40,085,000\DLV\PLANS\IMP\SD\SATICOY\085-SD-PP.DWG PLOTTED: Dec 17, 2022 - 1:58pm BY: CANDACE TONG



PROFILE
 HORIZ: 1"=40'
 VERT: 1"=4'

LINE B

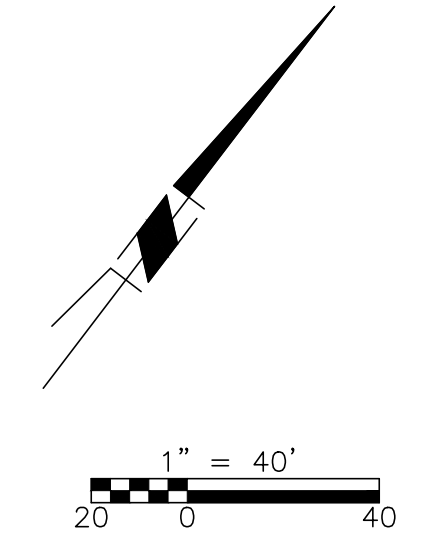


CONSTRUCTION NOTES

- ② CONSTRUCT 12" CLASS 315 PVC SCHEDULE 80 WITH MARKINGS & FITTINGS. INCLUDES BENDS, FITTINGS, AND OTHER APPURTENANCES. PIPE INSTALLATION, TRENCHING AND PAVEMENT REPAIR PER COUNTY OF VENTURA ROAD STANDARD PLATE E-11
- ⑤ INSTALL 1,000 GPM, 25' TYP PUMP VAULT PER DETAIL ON SHEET 7. INCLUDES PUMPS, SENSORS, AND ACCESS HATCH.
- ⑥ INSTALL 1,000 GPM UV TREATMENT PER DETAIL ON SHEET 7
- ⑦ INSTALL 350,500 CF DETENTION CHAMBER PER DETAIL ON SHEETS 8-10. AVOID CONFLICT WITH EXSTING STRUCTURES.
- ⑨ INSTALL CONTECH KF-11-16 MEMBRANE FILTRATION SYSTEM WITH PRETREATMENT (OR APPROVED EQUIVALENT) PER DETAIL ON SHEET 6. CONSTRUCT 4" DIAM. WICKS/WEEPOLES AT 12" O.C. AT VAULT BOTTOM FOR INTRINSIC INFILTRATION.
- ⑩ CONSTRUCT 8" CLASS 315 PVC SCHEDULE 80 WITH MARKINGS & FITTINGS. INCLUDES BENDS, FITTINGS, AND OTHER APPURTENANCES
- ⑬ CONSTRUCT 12" CLEANOUT PER SPPWC STD PLAN 204-2.
- ⑰ CONSTRUCT SEDIMENT TRAP AND LOW-FLOW NOTCH PER DETAIL ON SHEET 5
- ⑳ INSTALL 12" INLINE SWING CHECK VALVE
- ㉑ INSTALL FLAP GATE PER DETAIL ON SHEET 10
- ㉒ INSTALL VALVE VAULT PER DETAIL ON SHEET 7

LINE/CURVE DATA TABLE

NO	BEARING/DELTA	RADIUS	LENGTH	TANGENT
6	N51°20'00"E	---	55.32'	---
7	86°55'49"	22.50'	34.14'	21.33'
8	N35°35'49"W	---	141.17'	---
9	88°15'47"	22.50'	34.66'	21.83'
10	N52°39'58"E	---	119.95'	---



30% DESIGN
NOT FOR CONSTRUCTION



D			
C			
B			
A	ISSUED FOR FEASIBILITY STUDY	12-19-22	
△	REVISION	DESCRIPTION	APP. DATE

PREPARED BY:
Q3 Consulting
 27042 TOWNE CENTRE DRIVE, SUITE 110
 FOOTHILL RANCH, CA 92610
 949-259-6770

CT	DESIGNED	WATERSHED PROJECT MANAGER	DATE
CT	DRAWN	WATERSHED DEPUTY DIRECTOR	DATE
RC	CHECKED	WATERSHED DIRECTOR	DATE

VENTURA COUNTY
PUBLIC WORKS AGENCY
WATERSHED PROTECTION

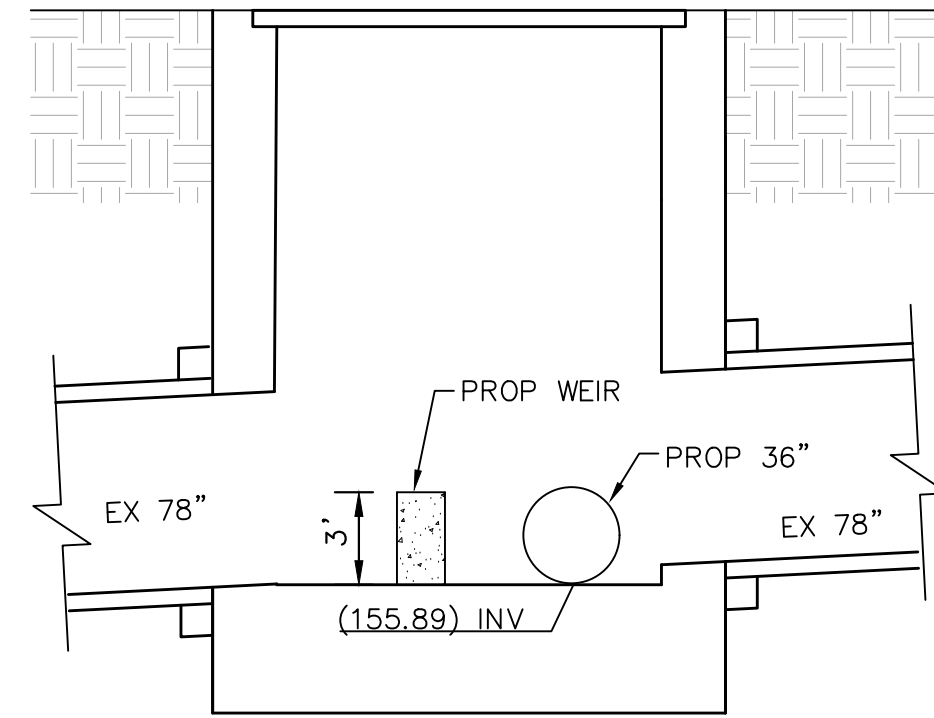
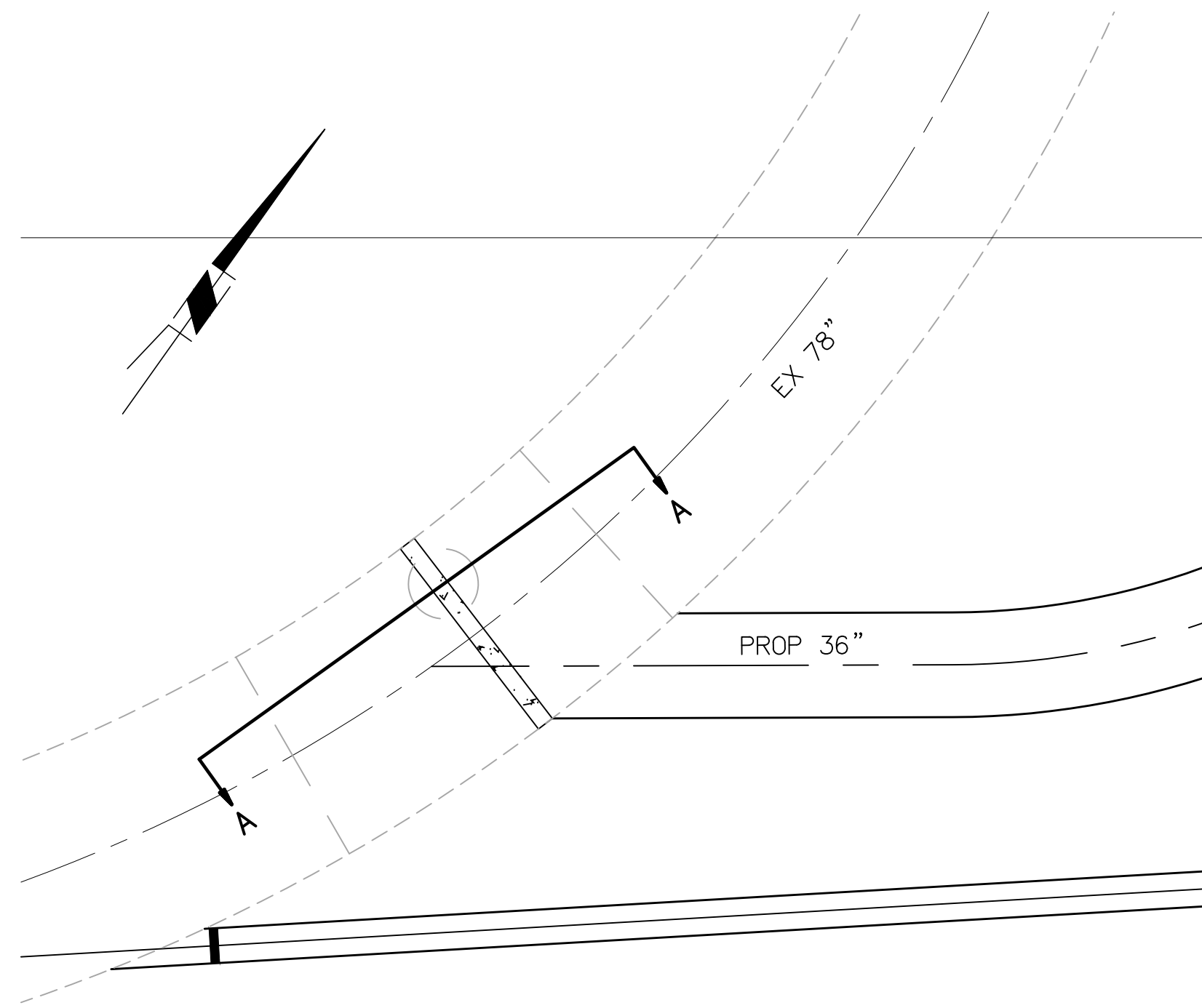
SPEC. NO.	N/A
PROJ. NO.	N/A

SATICOY PARK STORMWATER CAPTURE AND GROUNDWATER RECHARGE
 STORM DRAIN LINE B - PLAN & PROFILE

SHEET	4
OF	10
DRAWING NO.	WP-?-???

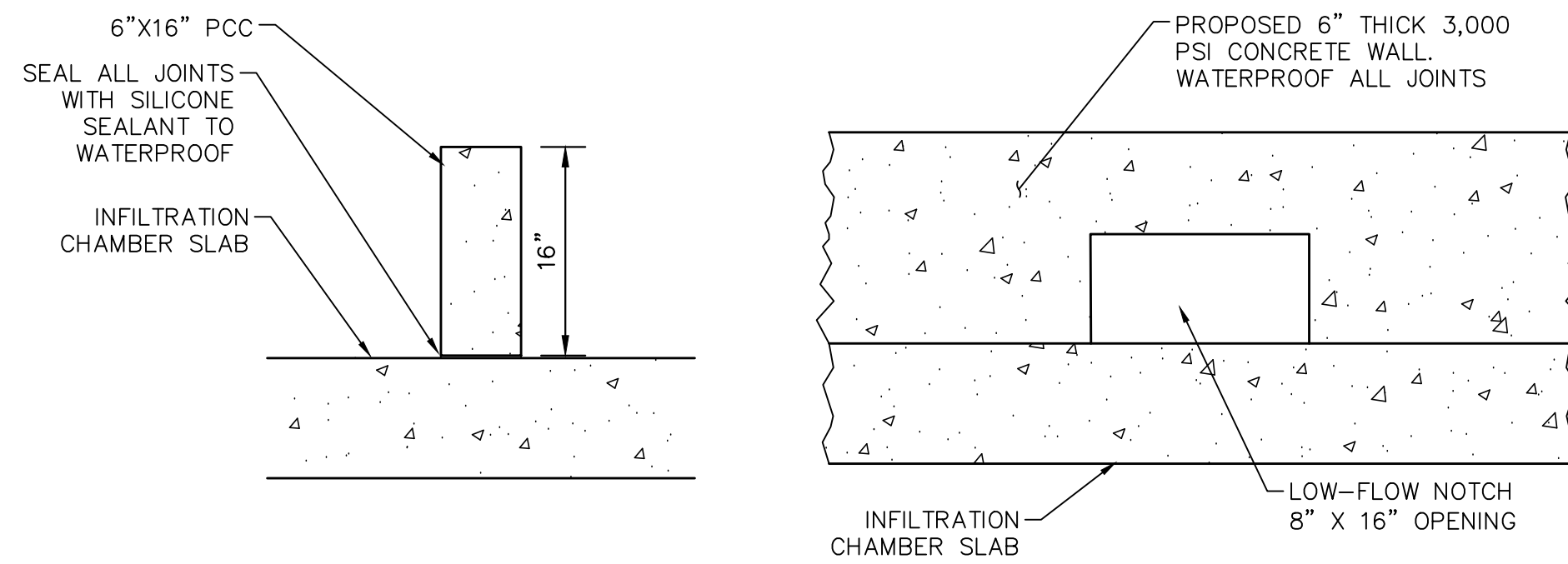
PLOT DATE: 12/17/22

N:\40.085.000\DLV\PLANS\IMP\SD\SATICOY\085-SD-PP.DWG PLOTTED: Dec 17, 2022 - 1:58pm BY: CANDACE TONG



SECTION A-A
 NOTE:
 INVERT ELEVATIONS TO BE FIELD VERIFIED

2
8 **STORM DRAIN DIVERSION DETAIL**
 N.T.S.



6
9 **SEDIMENT WALL DETAIL**
 N.T.S.

30% DESIGN
NOT FOR CONSTRUCTION



D				
C				
B				
A	ISSUED FOR FEASIBILITY STUDY	12-19-22		
△	REVISION	DESCRIPTION	APP.	DATE

PREPARED BY:
Q3 Consulting
 27042 TOWNE CENTRE DRIVE, SUITE 110
 FOOTHILL RANCH, CA 92610
 949-259-6770

DESIGNED	CT	WATERSHED PROJECT MANAGER	DATE
DRAWN	CT	WATERSHED DEPUTY DIRECTOR	DATE
CHECKED	RC	WATERSHED DIRECTOR	DATE

VENTURA COUNTY
PUBLIC WORKS AGENCY
WATERSHED PROTECTION

SPEC. NO.	N/A
PROJ. NO.	N/A

SATICOY PARK STORMWATER CAPTURE AND
GROUNDWATER RECHARGE
 DETAILS

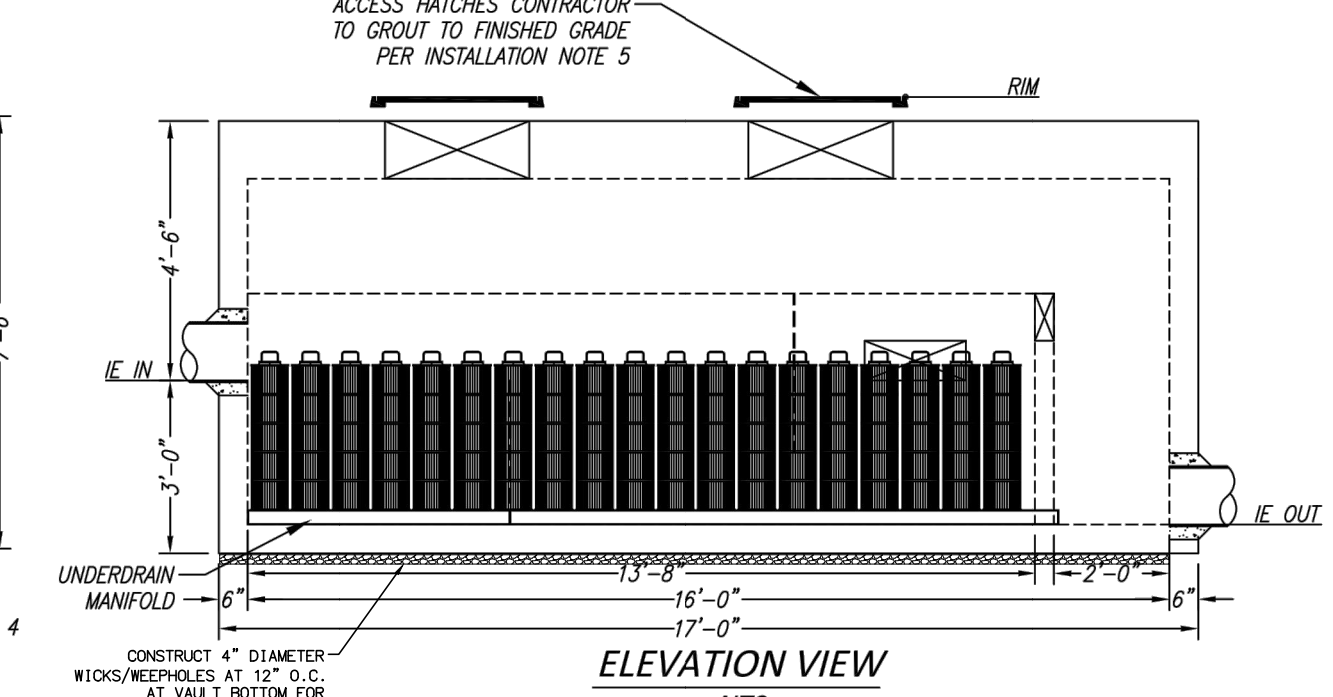
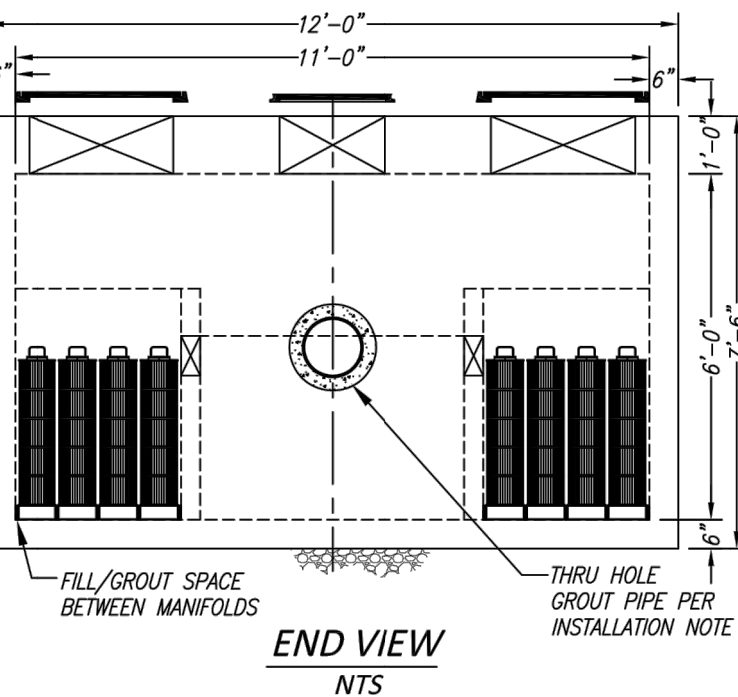
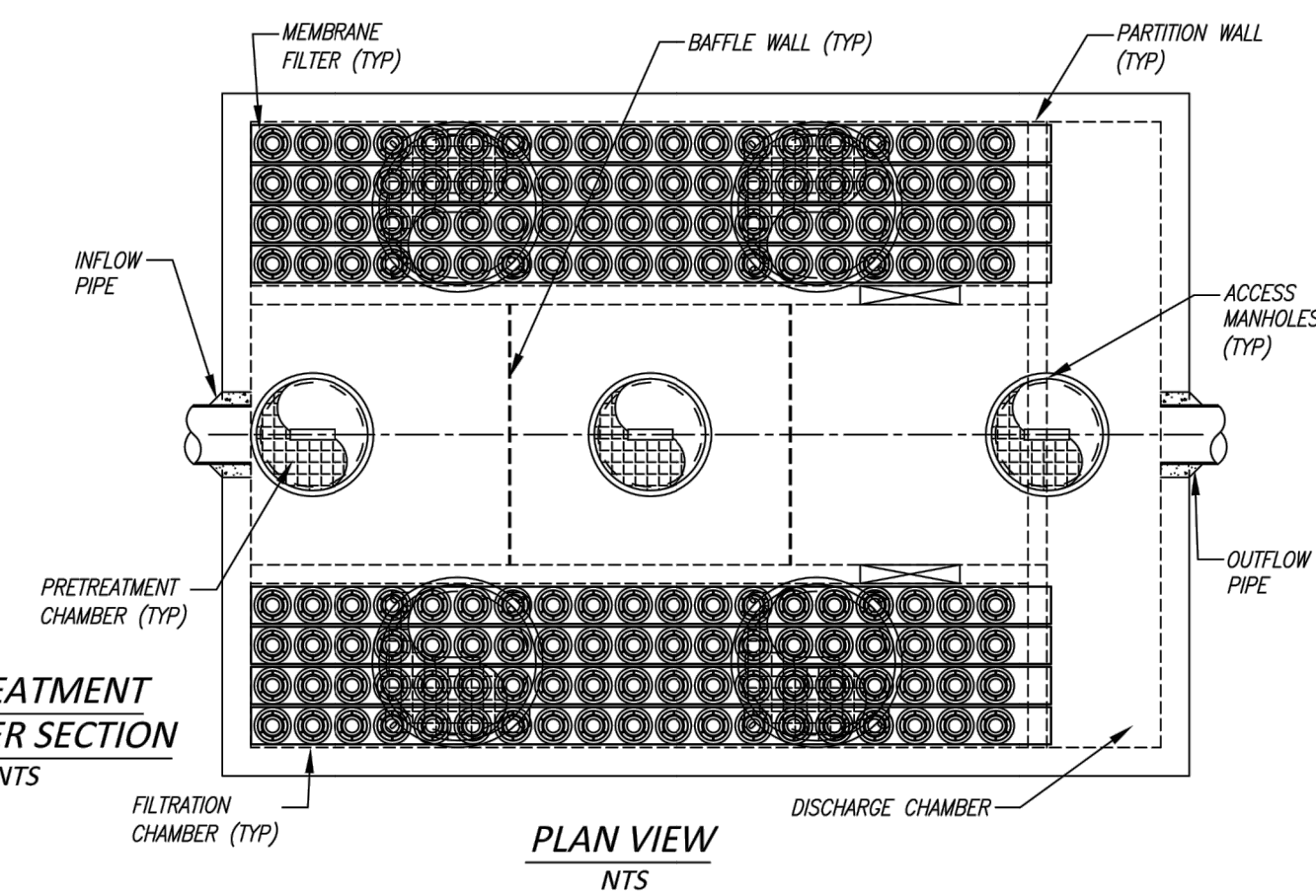
SHEET	5
OF	10
DRAWING NO.	WP-?-???

PLOT DATE: 12/17/22

N:\40,085,000\DLV\PLANS\IMP\SD\SATICOY\085-SD-DET.DWG PLOTTED: Dec 17, 2022 - 1:58pm BY: CANDACE TONG

SITE SPECIFIC DATA*			
PROJECT NUMBER			
PROJECT NAME			
PROJECT LOCATION			
STRUCTURE ID			
WATER QUALITY FLOW RATE (CFS)			
PEAK FLOW RATE (CFS)			
PEAK STORM DURATION (YEARS)			
PIPE DATA	I.E.	MATERIAL	DIAMETER
INLET PIPE 1			12"
OUTLET PIPE 1			12"
RIM ELEVATION			
SURFACE LOADING REQUIREMENT			
FRAME AND COVER	#24", #30"		
CORROSIVE SOIL CONDITIONS			
KNOWN GROUNDWATER ELEVATION			
NOTES:			
*PER ENGINEER OF RECORD			

KF PERFORMANCE DATA				
CARTRIDGE HEIGHT (IN)	30.75			
CARTRIDGE FLOW RATE (GPM)	8.50			
NUMBER OF CARTRIDGES	152			
TOTAL TREATMENT FLOW RATE (CFS)	2.88			
SEDIMENT STORAGE CAPACITY (CF)	59.27			
KF STORAGE CAPACITIES				
SEDIMENT CHAMBER CAPACITY				
LENGTH (FT)	WIDTH (FT)	HEIGHT (FT)	TOTAL (CF)	
CHAMBER 1	4.58	4.57	1.50	31.40
CHAMBER 2	9.10	4.57	0.50	20.79
FILTRATION CHAMBER CAPACITY*				
CHAMBER 1	1.3.67	2.88	0.25	3.54
CHAMBER 2	1.3.67	2.88	0.25	3.54
*VOLUME OF FILTERS SUBTRACTED IN STORAGE CAPACITY				



PROPRIETARY AND CONFIDENTIAL:
THE INFORMATION CONTAINED IN THIS DRAWING IS THE SOLE PROPERTY OF BIO CLEAN ENVIRONMENTAL SERVICES, INC. ANY REPRODUCTION IN PART OR AS A WHOLE WITHOUT THE WRITTEN PERMISSION OF BIO CLEAN ENVIRONMENTAL SERVICES, INC. IS PROHIBITED.



KF-11-16
MEMBRANE FILTRATION SYSTEM WITH PRETREATMENT
STANDARD DETAIL

SITE SPECIFIC DATA*			
PROJECT NUMBER			
PROJECT NAME			
PROJECT LOCATION			
STRUCTURE ID			
WATER QUALITY FLOW RATE (CFS)			
FULL CAPTURE TRASH FLOW RATE (CFS)			
PEAK FLOW RATE (CFS)			
PEAK STORM DURATION (YEARS)			
PIPE DATA	I.E.	MATERIAL	DIAMETER
INFLOW PIPE 1		TBD	36
OUTFLOW PIPE 1		TBD	36
RIM ELEVATION			
SURFACE LOADING REQUIREMENT	HS20		
FRAME AND COVER	(2) 36"x72" (1) 36"x36"		
CORROSIVE SOIL CONDITIONS	NA		
KNOWN GROUNDWATER ELEVATION	NA		
NOTES:			
*PER ENGINEER OF RECORD			

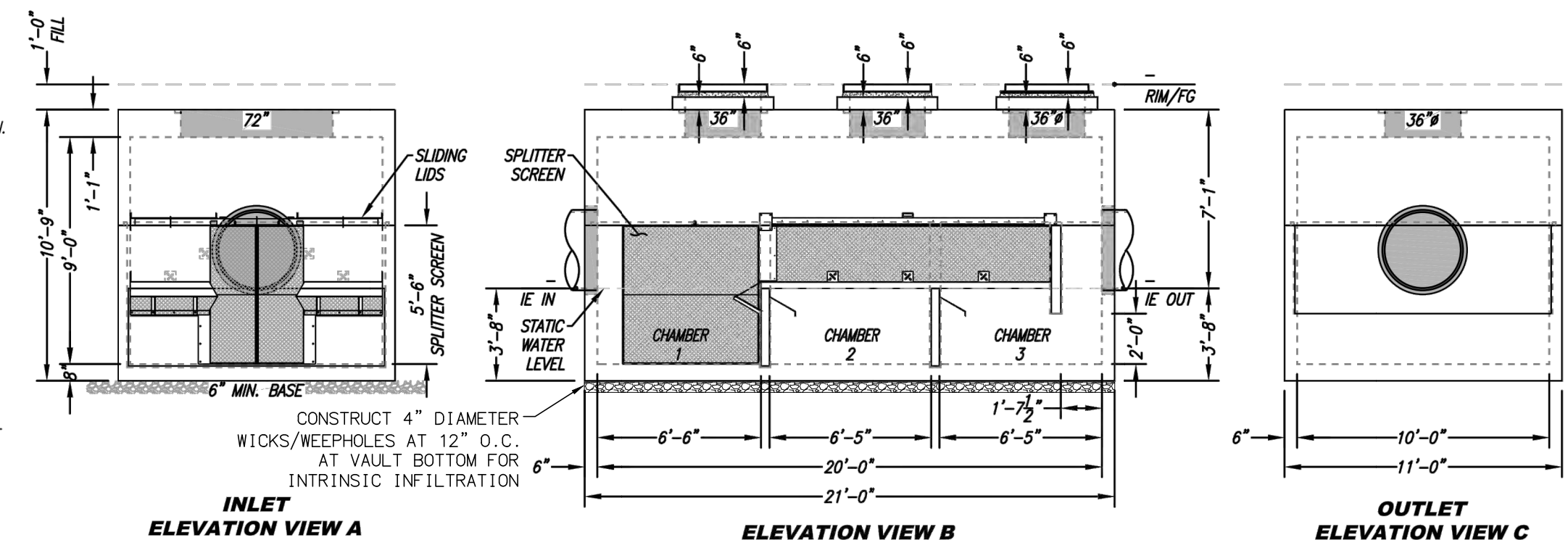
DSBB PERFORMANCE DATA				
TREATMENT FLOW RATE (CFS)	0.00			
FULL CAPTURE TRASH FLOW RATE (CFS)	0.00			
SETTLING AREA (SF)	200.00			
LOADING RATE (GPM/SF)	0.00			
SCREEN SYSTEM STORAGE CAPACITY (CF)	163.88			
SEDIMENT STORAGE CAPACITY (CF)	580.00			
BOX TSS REMOVAL @ ---- MICRON				
DSBB STORAGE CAPACITIES				
CASE SCREEN CAPACITY				
LENGTH (FT)	WIDTH (FT)	HEIGHT (FT)	TOTAL (CF)	
SCREEN 1	11.50	3.17	2.25	81.94
SCREEN 2	11.50	3.17	2.25	81.94
SEDIMENT CHAMBER CAPACITY				
CHAMBER 1	6.50	10.00	3.00	195.00
CHAMBER 2	6.42	10.00	3.00	192.50
CHAMBER 3	6.42	10.00	3.00	192.50

GENERAL NOTES

- BIO CLEAN TO PROVIDE ALL MATERIALS UNLESS OTHERWISE NOTED.
- ALL DIMENSIONS, ELEVATIONS, SPECIFICATIONS, AND CAPACITIES ARE SUBJECT TO CHANGE. FOR PROJECT SPECIFIC DRAWINGS DETAILING EXACT DIMENSIONS, WEIGHTS, AND ACCESSORIES PLEASE CONTACT BIO CLEAN.

INSTALLATION NOTES

- CONTRACTOR TO PROVIDE ALL LABOR, EQUIPMENT, MATERIALS, AND INCIDENTALS REQUIRED TO OFFLOAD AND INSTALL THE DSBB UNIT AND APPURTENANCES IN ACCORDANCE WITH THIS DRAWING AND THE MANUFACTURER'S SPECIFICATIONS, UNLESS OTHERWISE STATED IN MANUFACTURER'S CONTRACT.
- MANUFACTURER RECOMMENDS A 6" LEVEL ROCK BASE UNLESS SPECIFIED BY THE PROJECT ENGINEER. CONTRACTOR IS RESPONSIBLE TO VERIFY PROJECT ENGINEER'S RECOMMENDED BASE SPECIFICATIONS.
- ALL PIPES MUST BE FLUSH WITH INSIDE SURFACE OF CONCRETE. (PIPES CANNOT INTRUDE BEYOND FLUSH).
- ALL GAPS AROUND PIPES SHALL BE SEALED WATER TIGHT WITH A NON-SHRINK GROUT PER MANUFACTURER'S STANDARD CONNECTION DETAIL AND SHALL MEET OR EXCEED REGIONAL PIPE CONNECTION STANDARDS.
- CONTRACTOR RESPONSIBLE FOR INSTALLATION OF ALL RISERS, MANHOLES, AND HATCHES. ALL COVERS SHALL BE SHIPPED LOOSE. CONTRACTOR TO GROUT ALL MANHOLES AND HATCHES TO MATCH FINISHED SURFACE UNLESS SPECIFIED OTHERWISE.



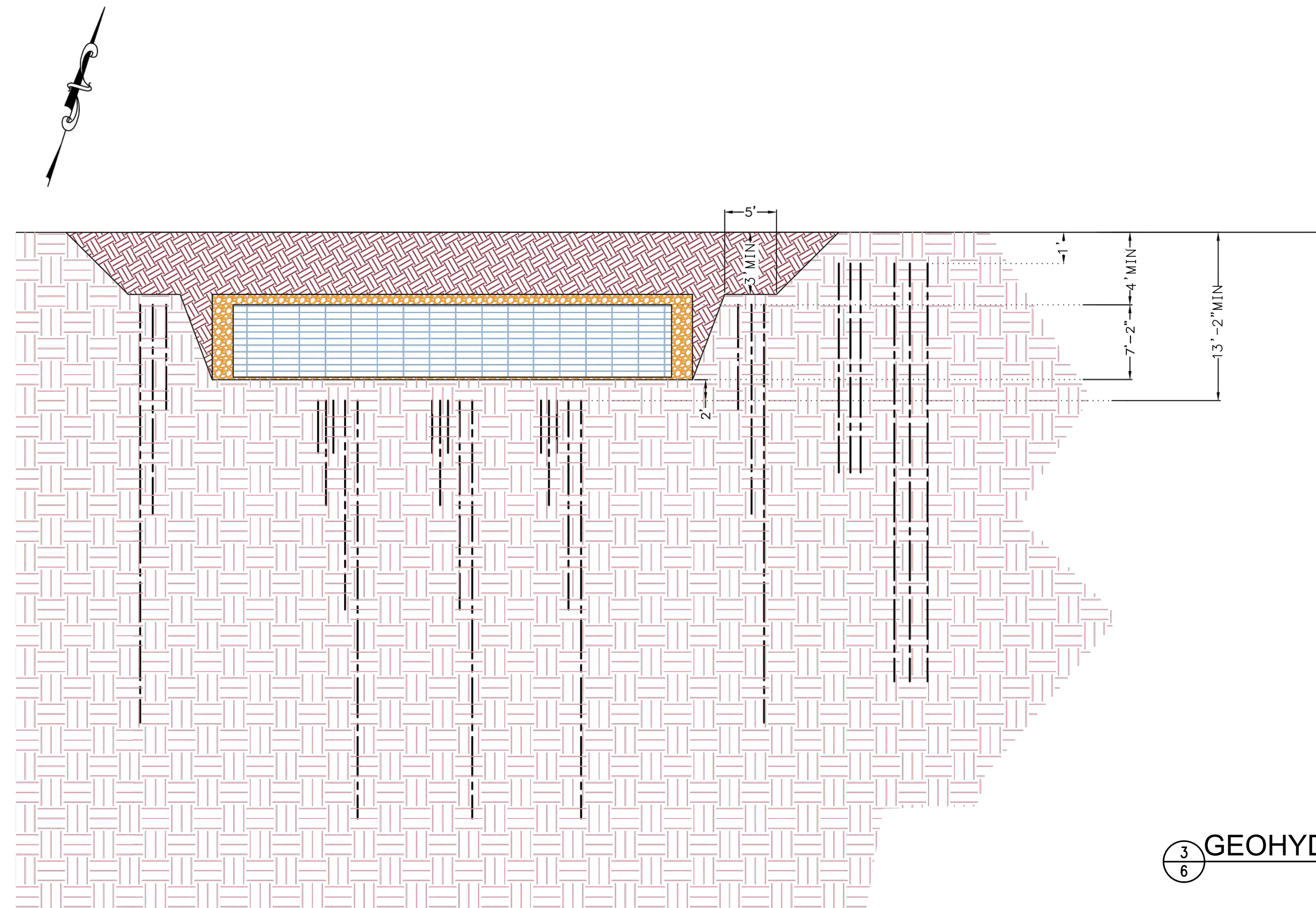
THIS PRODUCT MAY BE PROTECTED BY ONE OR MORE OF THE FOLLOWING US PATENTS: 6,458,692; 7,294,256; 7,946,902; 7,154,415; 7,200,942.

PROPRIETARY AND CONFIDENTIAL:
THE INFORMATION CONTAINED IN THIS DOCUMENT IS THE SOLE PROPERTY OF FORTERRA AND ITS COMPANIES. THIS DOCUMENT, FOR ANY PART THEREOF, MAY BE USED, REPRODUCED OR MODIFIED IN ANY MANNER WITHOUT THE WRITTEN CONSENT OF FORTERRA.

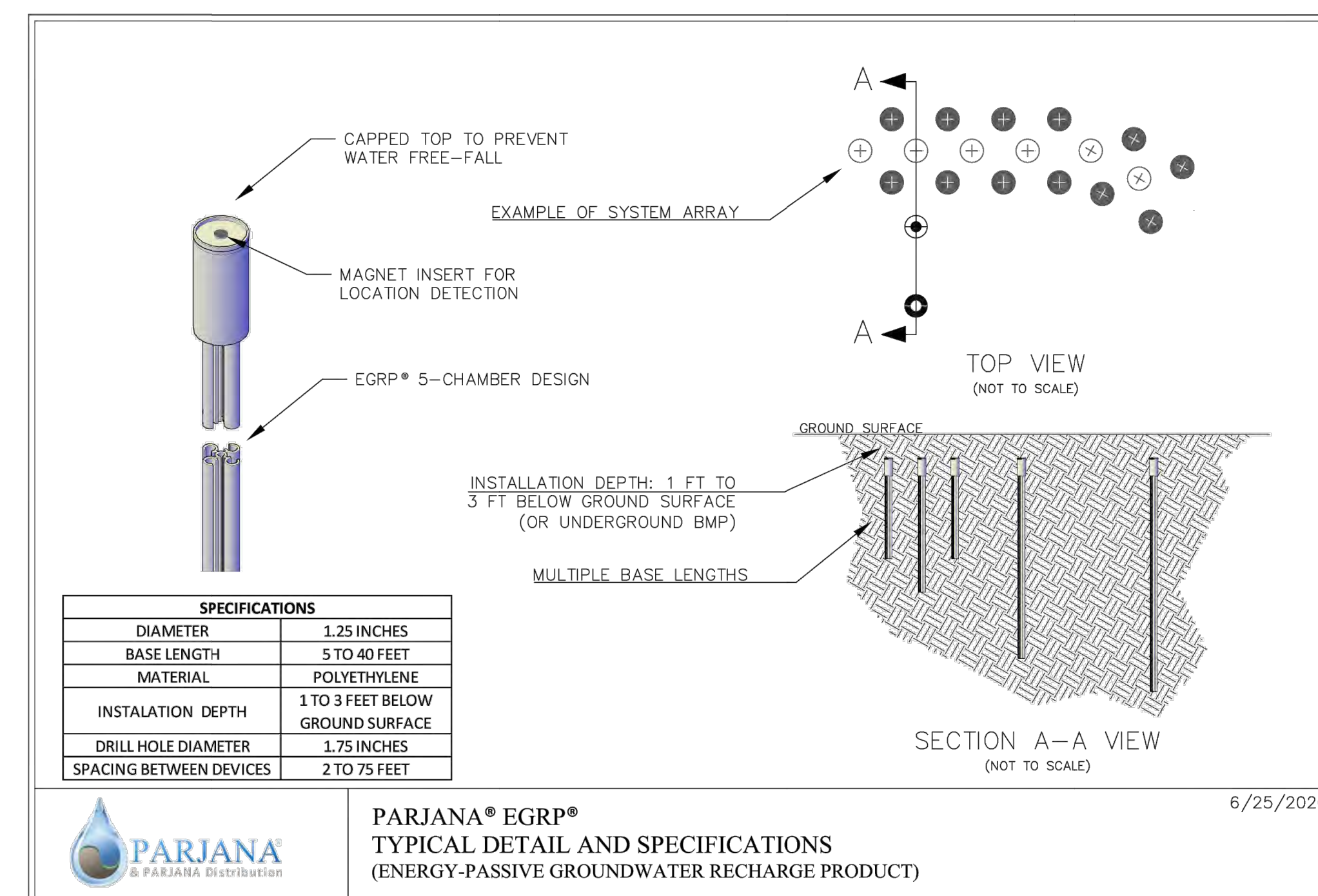


DSBB-10-20-108
DUAL STAGE HYDRODYNAMIC SEPARATOR
STANDARD DETAIL

1 FINE 120 MICRONS PRETREATMENT DETAILS OR APPROVED EQUIVALENT
NTS

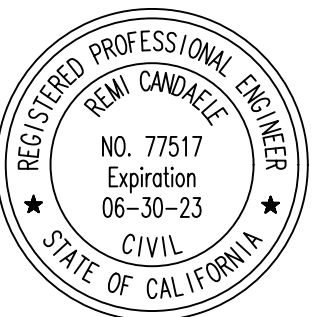


2 COARSE PRETREATMENT DETAILS OR APPROVED EQUIVALENT
NTS



3 GEOHYDRAULIC INFILTRATION TUBING OR APPROVED EQUIVALENT
NTS

30% DESIGN
NOT FOR CONSTRUCTION



D	DESIGNED	CT	WATERSHED PROJECT MANAGER	DATE
C	DRAWN	CT	WATERSHED DEPUTY DIRECTOR	DATE
B	CHECKED	RC	WATERSHED DIRECTOR	DATE
A	ISSUED FOR FEASIBILITY STUDY	12-19-22		
△	REVISION	DESCRIPTION	APP.	DATE

PREPARED BY:
Q3 Consulting
27042 TOWNE CENTRE DRIVE, SUITE 110
FOOTHILL RANCH, CA 92610
949-259-6770

VENTURA COUNTY
PUBLIC WORKS AGENCY
WATERSHED PROTECTION

SPEC. NO.	N/A
PROJ. NO.	N/A

SATICOY PARK STORMWATER CAPTURE AND GROUNDWATER RECHARGE
DETAILS

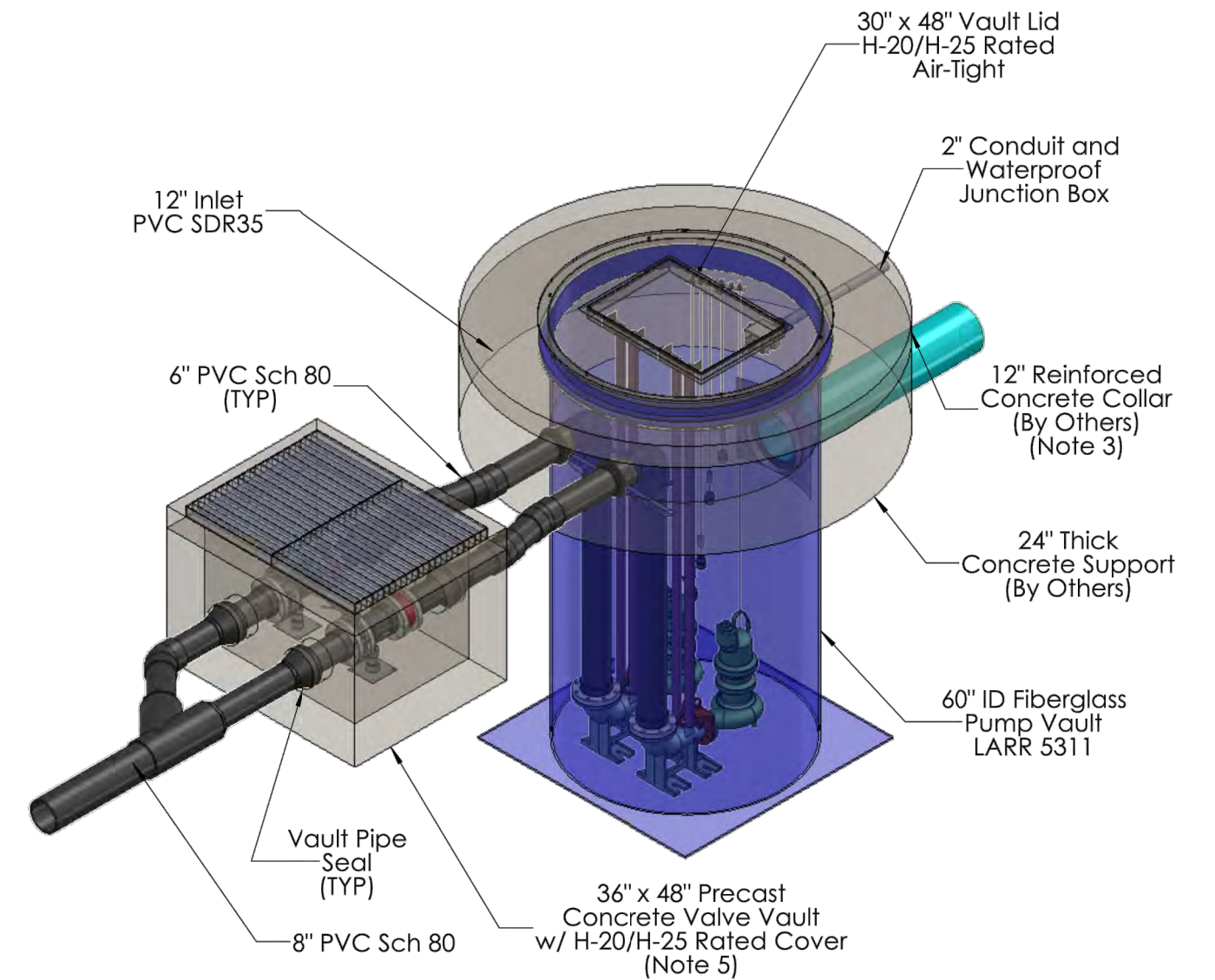
SHEET	6
OF	10
DRAWING NO.	WP-?-???

PLOT DATE: 12/17/22

N:\40.085.000\DLV\PLANS\MP\SD\SATICOY\085-DETAILS.DWG PLOTTED: Dec 17, 2022 - 2:00pm BY: CANDACE TONG

STORMWATER PUMP STATION DETAIL
SATICOY PARK, VENTURA COUNTY, CA

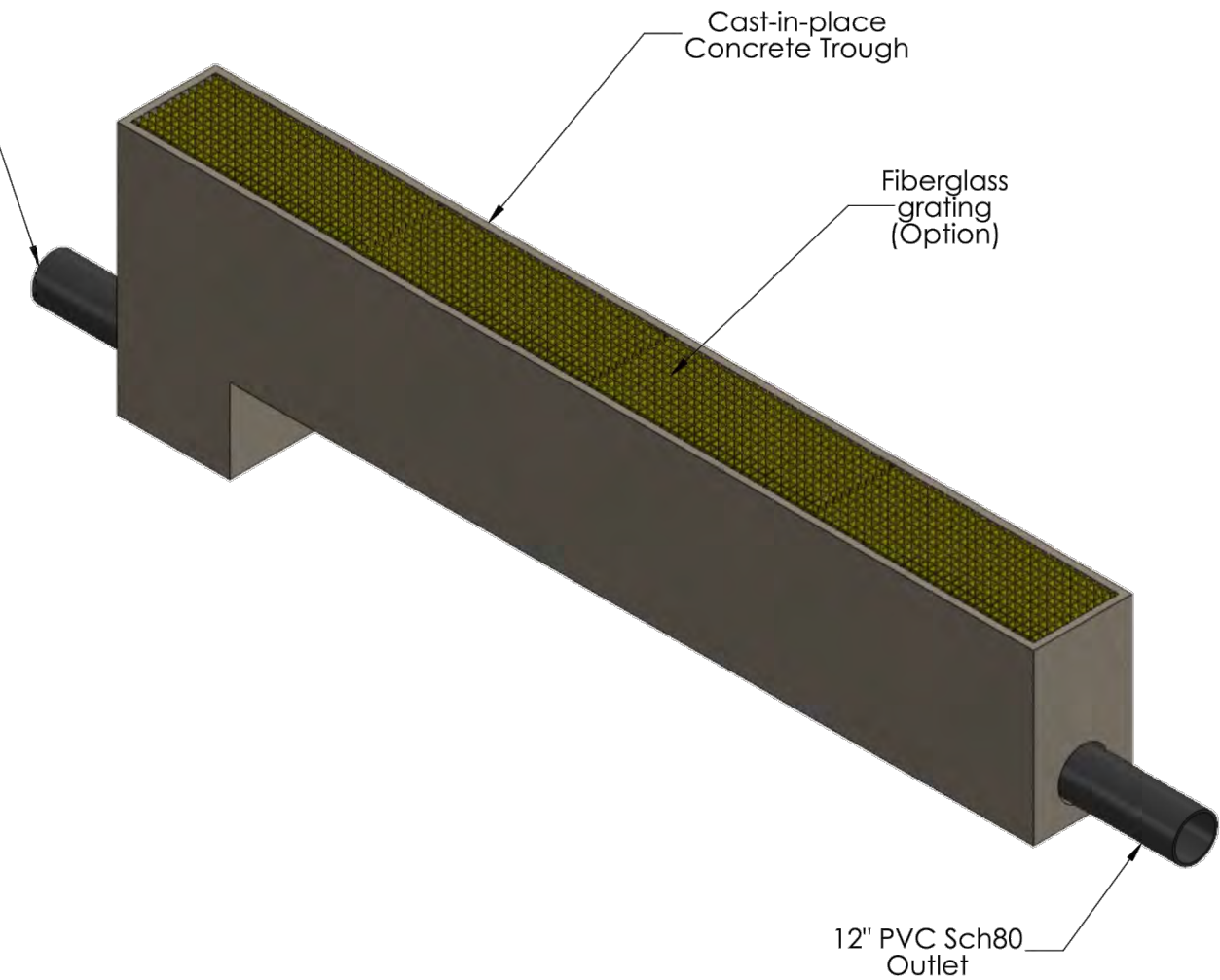
- NOTES:
1. ALL DIMENSIONS AND ELEVATIONS SHOWN ARE NOMINAL DIMENSIONS. IT IS THE RESPONSIBILITY OF THE ON-SITE CONTRACTOR OR CUSTOMER TO VERIFY THE ACCURACY OF ANY CRITICAL DIMENSIONS OR ELEVATIONS PRIOR TO SETTING OR INSTALLING ANY EQUIPMENT.
 2. ALL MATERIALS SHOWN ON THIS SHEET SHALL BE SUPPLIED BY SANTA FE WATER SYSTEMS (SFWs) AS A COMPLETE SYSTEM, EXCEPT WHERE NOTED "BY OTHERS", AND DELIVERED TO THE SITE AFTER THE HOLE HAS BEEN EXCAVATED AND SHORED. THE CONTRACTOR SHALL SUPPLY A CRANE OR RIGGING OF SUFFICIENT SIZE TO LOWER ALL PIECES INTO THE HOLE SAFELY. PRIOR TO INSTALLING THE WET WELL, THE CONTRACTOR SHALL CONSULT WITH PRODUCT INSTALLATION INSTRUCTIONS TO ENSURE THAT ALL INSTALLATION CONDITIONS ARE MET. DEVIATION FROM THESE INSTRUCTIONS SHALL VOID ANY WARRANTY PROVIDED BY SFWs IN THE EVENT OF VAULT FAILURE.
 3. UPON ESTABLISHMENT OF PRIOR AGREEMENT, SANTA FE WATER SYSTEMS WILL PROVIDE A REPRESENTATIVE FOR TECHNICAL ASSISTANCE ON THE DAY OF INSTALLATION TO ANSWER ANY QUESTIONS THAT MAY ARISE.
 4. THE CONTRACTOR IS RESPONSIBLE FOR ALL INSTALLATION, INCLUDING, BUT NOT LIMITED TO PLUMBING AND ELECTRICAL CONNECTIONS.
 5. PUMPS SHALL BE DEMING 4D, 5HP, 3PH, 460V, 4" DISCHARGE, 500 GPM @ 15' TDH MIN., EXPLOSION PROOF, MOTORS SHALL BE INVERTER DUTY FOR VARIABLE SPEED CONTROL.
 6. PUMP CONTROLLER TO BE SEEWATER DUPLEX VFD CONTROL PANEL W/ PLC, 460VAC, 3PH, NEMA 3R.
 7. MOUNT PUMP CONTROLLER IN LOCATION SPECIFIED BY OWNER. FOR LOCATIONS GREATER THAN 15 FEET FROM VAULT, CONSULT WITH SFWs TO DETERMINE NEED FOR ADDITIONAL CABLE AND/OR EQUIPMENT.
 8. ALL COMPONENTS PROVIDED BY SANTA FE WATER SYSTEMS SHALL BE SUITABLE FOR USE WITH OPERATIONAL AND ENVIRONMENTAL CONDITIONS. EQUIPMENT DOCUMENTATION SHALL BE PROVIDED FOR REVIEW UPON ACCEPTANCE OF PURCHASE ORDER.
 10. COORDINATE PIPE SIZES AND INVERT ELEVATIONS WITH CIVIL SHEETS.
 11. ALL STRUCTURES TO BE H-20 INCIDENTAL TRAFFIC RATED FOR PARKING LOT SPEEDS.
 12. CONCRETE MANHOLE COLLAR SHALL BE INSTALLED SUCH THAT SURFACE LOADING DOES NOT BEAR ON FIBERGLASS VAULT.



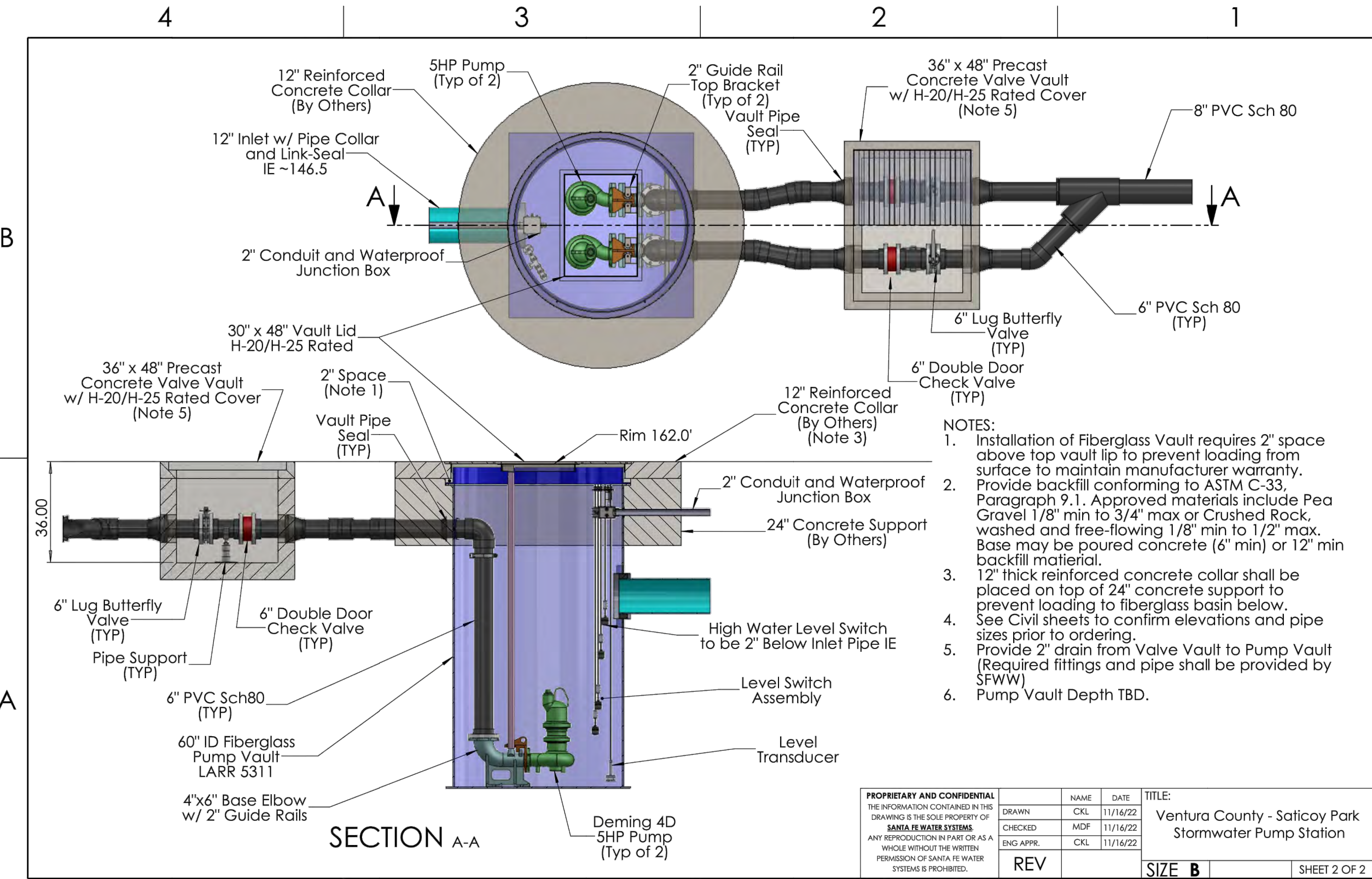
PROPRIETARY AND CONFIDENTIAL		NAME	DATE	TITLE
THE INFORMATION CONTAINED IN THIS DRAWING IS THE SOLE PROPERTY OF SANTA FE WATER SYSTEMS. ANY REPRODUCTION IN PART OR AS A WHOLE WITHOUT THE WRITTEN PERMISSION OF SANTA FE WATER SYSTEMS IS PROHIBITED.		DRWN	11/16/22	
		CHKD	11/16/22	
		ENGR	11/16/22	
		REV		
		SIZE	B	SHEET 1 OF 2

Preliminary

- Notes:
1. Design shown is preliminary based upon 30 second contact time with UV lamps for 500gpm flow-thru rate. To finalize design, water quality will need to be evaluated to ensure proper configuration of system using an adequate number of lamp modules.
 2. Electrical power options:
1. 120v / 1ph
2. 208v / 3ph
3. 240v / 1ph
 3. Power requirement: 87.5 watts/lamp. Configuration shown uses 8 lamp-modules in a 2 bank (series) x 7 module configuration. Total lamp power required = 9800 watts.
 4. UV Module Control Panel is not shown. Location must be no greater than 20ft from trough.
 5. Options exist for remote monitoring and lamp operation based on flow pacing. Final configuration of system control to be determined.
 6. Concrete trough to be installed in the field by contractor. Consult with geotechnical and structural engineers for wall thickness and reinforcement required.
 7. Fiberglass grating shown is one option for covering the trough. Final covering to be determined by civil engineer.
 8. All equipment and appliances shown, aside from concrete trough, shall be supplied by Santa Fe Water Systems.

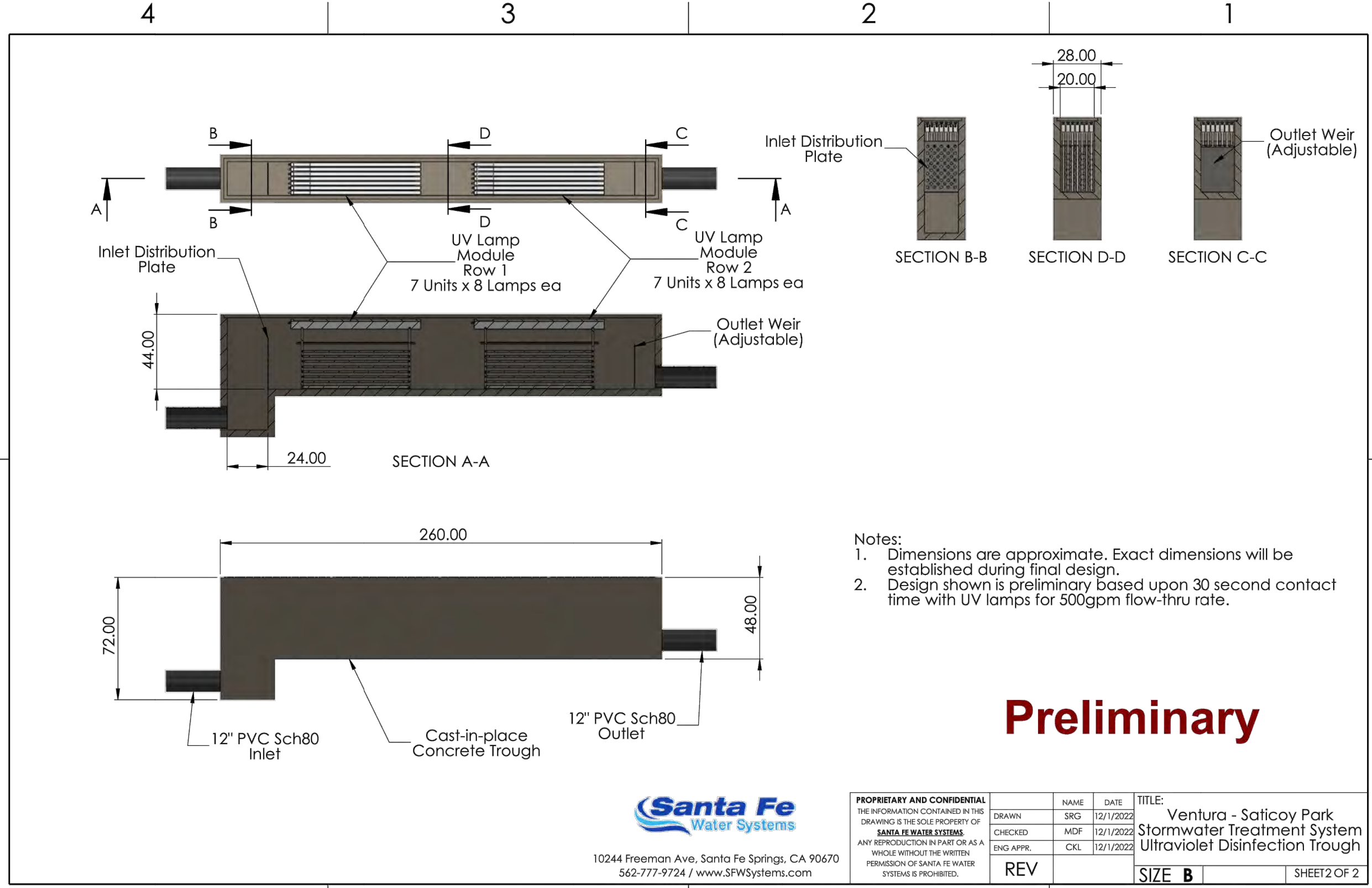


PROPRIETARY AND CONFIDENTIAL		NAME	DATE	TITLE
THE INFORMATION CONTAINED IN THIS DRAWING IS THE SOLE PROPERTY OF SANTA FE WATER SYSTEMS. ANY REPRODUCTION IN PART OR AS A WHOLE WITHOUT THE WRITTEN PERMISSION OF SANTA FE WATER SYSTEMS IS PROHIBITED.		DRWN	12/1/2022	
		CHKD	12/1/2022	
		ENGR	12/1/2022	
		REV		
		SIZE	B	SHEET 2 OF 2



- NOTES:
1. Installation of Fiberglass Vault requires 2" space above top vault lip to prevent loading from surface to maintain manufacturer warranty. Provide backfill conforming to ASTM C-33, Paragraph 9.1. Approved materials include Pea Gravel 1/8" min to 3/4" max or Crushed Rock, washed and free-flowing 1/8" min to 1/2" max. Base may be poured concrete (6" min) or 12" min backfill material.
 2. 12" thick reinforced concrete collar shall be placed on top of 24" concrete support to prevent loading to fiberglass basin below. See Civil sheets to confirm elevations and pipe sizes prior to ordering.
 3. Provide 2" drain from Valve Vault to Pump Vault (Required fittings and pipe shall be provided by SFWW).
 4. Pump Vault Depth TBD.

PROPRIETARY AND CONFIDENTIAL		NAME	DATE	TITLE
THE INFORMATION CONTAINED IN THIS DRAWING IS THE SOLE PROPERTY OF SANTA FE WATER SYSTEMS. ANY REPRODUCTION IN PART OR AS A WHOLE WITHOUT THE WRITTEN PERMISSION OF SANTA FE WATER SYSTEMS IS PROHIBITED.		DRWN	11/16/22	
		CHKD	11/16/22	
		ENGR	11/16/22	
		REV		
		SIZE	B	SHEET 2 OF 2



- Notes:
1. Dimensions are approximate. Exact dimensions will be established during final design.
 2. Design shown is preliminary based upon 30 second contact time with UV lamps for 500gpm flow-thru rate.



PROPRIETARY AND CONFIDENTIAL		NAME	DATE	TITLE
THE INFORMATION CONTAINED IN THIS DRAWING IS THE SOLE PROPERTY OF SANTA FE WATER SYSTEMS. ANY REPRODUCTION IN PART OR AS A WHOLE WITHOUT THE WRITTEN PERMISSION OF SANTA FE WATER SYSTEMS IS PROHIBITED.		DRWN	12/1/2022	
		CHKD	12/1/2022	
		ENGR	12/1/2022	
		REV		
		SIZE	B	SHEET 2 OF 2

5 PUMP VAULT AND VALVE VAULT DETAILS

6 UV TREATMENT DETAILS

30% DESIGN
NOT FOR CONSTRUCTION



DESIGNED	CT	WATERSHED PROJECT MANAGER	DATE
DRAWN	RC	WATERSHED DEPUTY DIRECTOR	DATE
CHECKED		WATERSHED DIRECTOR	DATE

VENTURA COUNTY
PUBLIC WORKS AGENCY
WATERSHED PROTECTION

SPEC. NO.	N/A
PROJ. NO.	N/A

SATICOY PARK STORMWATER CAPTURE AND
GROUNDWATER RECHARGE
DETAILS

SHEET	7
OF	10
DRAWING NO.	WP-?-???

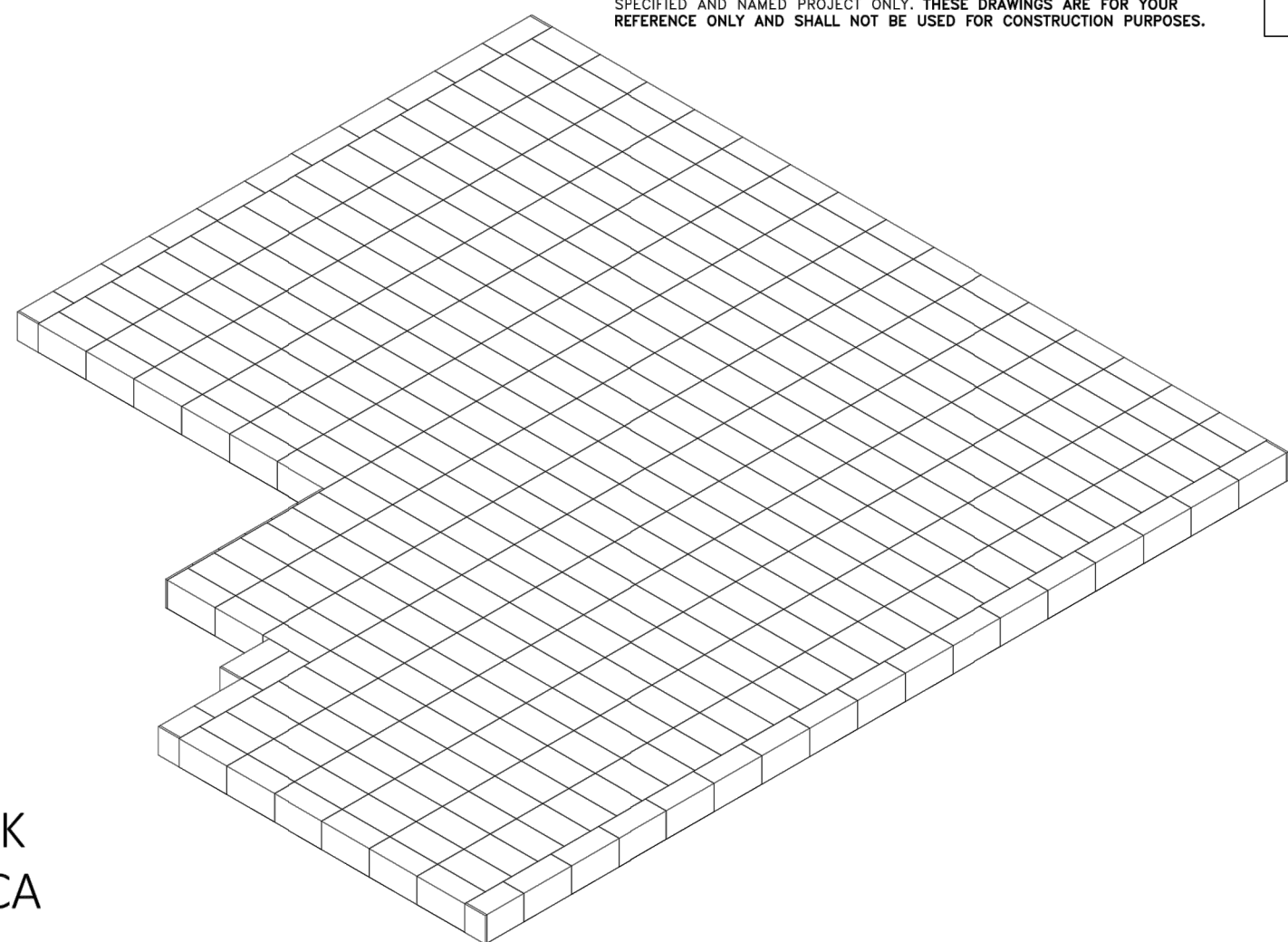
PLOT DATE: 12/17/22

N:\40,085,000\DLV\PLANS\MP\SD\SATICOY\085-DETAILS.DWG PLOTTED: Dec 17, 2022 - 2:00pm BY: CANDACE TONG



MODULAR CONCRETE
STORMWATER MANAGEMENT

THE STORMTRAP DRAWINGS SHALL NOT BE ALTERED OR MANIPULATED IN WHOLE OR IN PART WITHOUT WRITTEN CONSENT OF STORMTRAP. USE OF THESE DRAWINGS IS STRICTLY GRANTED TO YOU, OUR CLIENT, FOR THE SPECIFIED AND NAMED PROJECT ONLY. THESE DRAWINGS ARE FOR YOUR REFERENCE ONLY AND SHALL NOT BE USED FOR CONSTRUCTION PURPOSES.



SATICOY PARK
VENTURA, CA

SHEET INDEX	
PAGE	DESCRIPTION
0.0	COVER SHEET
1.0	SINGLETRAP DESIGN CRITERIA
2.0	SINGLETRAP SYSTEM LAYOUT
3.0	SINGLETRAP INSTALLATION SPECIFICATIONS
3.1	SINGLETRAP INSTALLATION SPECIFICATIONS
4.0	SINGLETRAP BACKFILL SPECIFICATIONS
5.0	RECOMMENDED ROOF ACCESS OPENING SPECIFICATIONS
6.0	SPLASH PAD & GEOWEB DETAILS
7.0	SINGLETRAP MODULE TYPES

STORMTRAP CONTACT INFORMATION
STORMTRAP SUPPLIER: STORMTRAP
CONTACT NAME: CHARLIE CARTER
CELL PHONE: 760-212-5628
SALES EMAIL: CCARTER@STORMTRAP.COM

StormTrap
1287 WINDHAM PARKWAY
ROSEMILLE, IL 60446
P815-941-4549 / F331-318-5347

ENGINEER INFORMATION:
Q3 CONSULTING
27042 TOWNE CENTER DR
#110
FOOTHILL RANCH, CA
949-259-6770

PROJECT INFORMATION:
SATICOY PARK

VENTURA, CA
CURRENT ISSUE DATE:
12/5/2022
ISSUED FOR:
PRELIMINARY

REV	DATE	ISSUED FOR:	OWN BY:
Δ	12/5/2022	PRELIMINARY	RAL

SCALE:
NTS

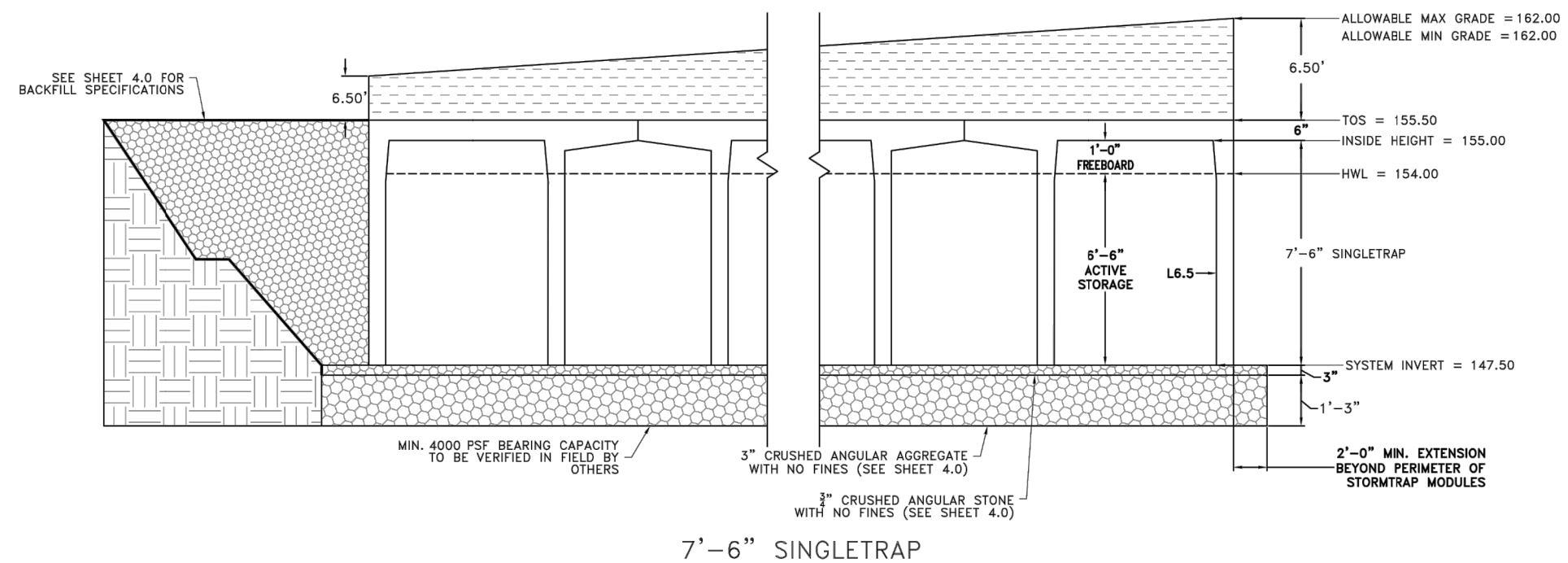
SHEET TITLE:
COVER SHEET

SHEET NUMBER:
0.0

STRUCTURAL DESIGN LOADING CRITERIA
LIVE LOADING: AASHTO HS-20 HIGHWAY LOADING
GROUND WATER TABLE: BELOW INVERT OF SYSTEM
SOIL BEARING PRESSURE: 4000PSF
SOIL DENSITY: 120 PCF
EQUIVALENT UNSATURATED
EQUIVALENT SATURATED
LATERAL ACTIVE EARTH PRESSURE: 35 PSF / FT.
EQUIVALENT SATURATED
LATERAL ACTIVE EARTH PRESSURE: 80 PSF/FT. (F WATER TABLE PRESENT)
APPLICABLE CODES: ASTM C857
ACI-318
BACKFILL TYPE: SEE SHEET 4.0 FOR BACKFILL OPTIONS

STORMTRAP SYSTEM INFORMATION
TOTAL WATER STORAGE PROV: 350,487.54 CUBIC FEET
WATER STORAGE PROV: 303,755.87 CUBIC FEET
ELEV 147.50 - 154.00
UNIT HEADROOM: 7'-6" SINGLETRAP

SITE SPECIFIC DESIGN CRITERIA
1. STORMTRAP UNITS SHALL BE MANUFACTURED AND INSTALLED ACCORDING TO SHOP DRAWINGS APPROVED BY THE INSTALLING CONTRACTOR AND ENGINEER OF RECORD. THE SHOP DRAWINGS SHALL INDICATE SIZE AND LOCATION OF ROOF OPENINGS AND INLET/ OUTLET PIPE TYPES, SIZES, INVERT ELEVATIONS AND SIZE OF OPENINGS.
2. COVER RANGE: MIN. 6.50' MAX. 6.50' CONSULT STORMTRAP FOR ADDITIONAL COVER OPTIONS.
3. ALL DIMENSIONS AND SOIL CONDITIONS, INCLUDING BUT NOT LIMITED TO GROUNDWATER AND SOIL BEARING CAPACITY ARE REQUIRED TO BE VERIFIED IN THE FIELD BY OTHERS PRIOR TO STORMTRAP INSTALLATION.
4. FOR STRUCTURAL CALCULATIONS THE GROUND WATER TABLE IS ASSUMED TO BE BELOW INVERT OF SYSTEM IF WATER TABLE IS DIFFERENT THAN ASSUMED, CONTACT STORMTRAP.



StormTrap
1287 WINDHAM PARKWAY
ROSEMILLE, IL 60446
P815-941-4549 / F331-318-5347

ENGINEER INFORMATION:
Q3 CONSULTING
27042 TOWNE CENTER DR
#110
FOOTHILL RANCH, CA
949-259-6770

PROJECT INFORMATION:
SATICOY PARK

VENTURA, CA
CURRENT ISSUE DATE:
12/5/2022
ISSUED FOR:
PRELIMINARY

REV	DATE	ISSUED FOR:	OWN BY:
Δ	12/5/2022	PRELIMINARY	RAL

SCALE:
NTS

SHEET TITLE:
SINGLETRAP DESIGN CRITERIA

SHEET NUMBER:
1.0

BILL OF MATERIALS		
QTY	UNIT TYPE	DESCRIPTION
0	I	7'-6" SINGLETRAP 0
354	II	7'-6" SINGLETRAP 2,5403
0	III	7'-6" SINGLETRAP 0
59	IV	7'-6" SINGLETRAP 2,5075
0	VI	7'-6" SINGLETRAP 0
3	SP1V	7'-6" SINGLETRAP VARIES
5	I2	PANEL 6" THICK PANEL 0
7	I4	PANEL 6" THICK PANEL 3975
0	I7	PANEL 6" THICK PANEL 0
77	JOINTWAP	150' PER ROLL
0	JOINTTAP	14.5' PER ROLL
TOTAL PANELS = 416		
TOTAL PANELS = 12		
HEAVIEST PICK WEIGHT = 23463		

LOADING DISCLAIMER:

STORMTRAP IS NOT DESIGNED TO ACCEPT ANY ADDITIONAL LOADINGS FROM NEARBY STRUCTURES NEXT TO OR OVER THE TOP OF STORMTRAP. IF ADDITIONAL LOADING CONSIDERATIONS ARE REQUIRED FOR STRUCTURAL DESIGN OF STORMTRAP, PLEASE CONTACT STORMTRAP IMMEDIATELY.

TREE LOADING DISCLAIMER:

THE STORMTRAP SYSTEM HAS NOT BEEN DESIGNED TO SUPPORT THE ADDITIONAL WEIGHT OF ANY TREES. FURTHERMORE, THE ROOTS OF THE TREES MUST BE CONTAINED TO PREVENT FUTURE DAMAGE TO THE STORMTRAP SYSTEM. STORMTRAP ACCEPTS NO LIABILITY FOR DAMAGES CAUSED BY TREES OR OTHER VEGETATION PLACED AROUND OR ON TOP OF THE SYSTEM.

SEDIMENT/SAND FILTER DISCLAIMER:

FOR SYSTEMS CONTAINING SEDIMENT AND SAND FILTER MODULES; IF REQUIRED TO BE SEALED TO PREVENT SAND AND/OR PRE-TREATED WATER FROM MIGRATING INTO ADJOINING MODULES, IT IS THE SOLE RESPONSIBILITY OF THE INSTALLING CONTRACTOR TO ENSURE THAT THOSE MODULES ARE SEALED.

DESIGN CRITERIA

ALLOWABLE MAX GRADE = 162.00
ALLOWABLE MIN GRADE = 162.00
INSIDE HEIGHT ELEVATION = 155.00
SYSTEM INVERT = 147.50

NOTES:

- DIMENSIONING OF STORMTRAP SYSTEM SHOWN BELOW ALLOW FOR A 3/4" GAP BETWEEN EACH MODULE.
- ALL DIMENSIONS TO BE VERIFIED IN THE FIELD BY OTHERS.
- SEE SHEET 3.0 FOR INSTALLATION SPECIFICATIONS.
- SEE SHEETS 6.0 & 6.1 FOR SPLASH PAD DETAILS AND LAYOUT.
- SP - INDICATES A MODULE WITH MODIFICATIONS.
- P - INDICATES A MODULE WITH A PANEL ATTACHMENT.
- CONTRACTORS RESPONSIBILITY TO ENSURE CONSISTENCY/ACCURACY TO FINAL ENGINEER OF RECORD PLAN SET.
- IF A WATERTIGHT SOLUTION IS REQUIRED FOR AN OUTLET CONTROL STRUCTURE, ALL EXTERIOR JOINTS, INCLUDING JOINT BETWEEN TOP AND BASE MODULES, BETWEEN TOP AND BASE OF ADJOINING SYMONS WALLS AND JOINTS BETWEEN MODULE AND ADJACENT END PANELS WILL BE THE SOLE RESPONSIBILITY OF THE INSTALLING CONTRACTOR TO PROVIDE AND INSTALL THE WATERTIGHT APPLICATION PER THE EOP'S SPECIFICATION.

StormTrap
1287 WINDHAM PARKWAY
ROSEMILLE, IL 60446
P815-941-4549 / F331-318-5347

ENGINEER INFORMATION:
Q3 CONSULTING
27042 TOWNE CENTER DR
#110
FOOTHILL RANCH, CA
949-259-6770

PROJECT INFORMATION:
SATICOY PARK

VENTURA, CA
CURRENT ISSUE DATE:
12/5/2022
ISSUED FOR:
PRELIMINARY

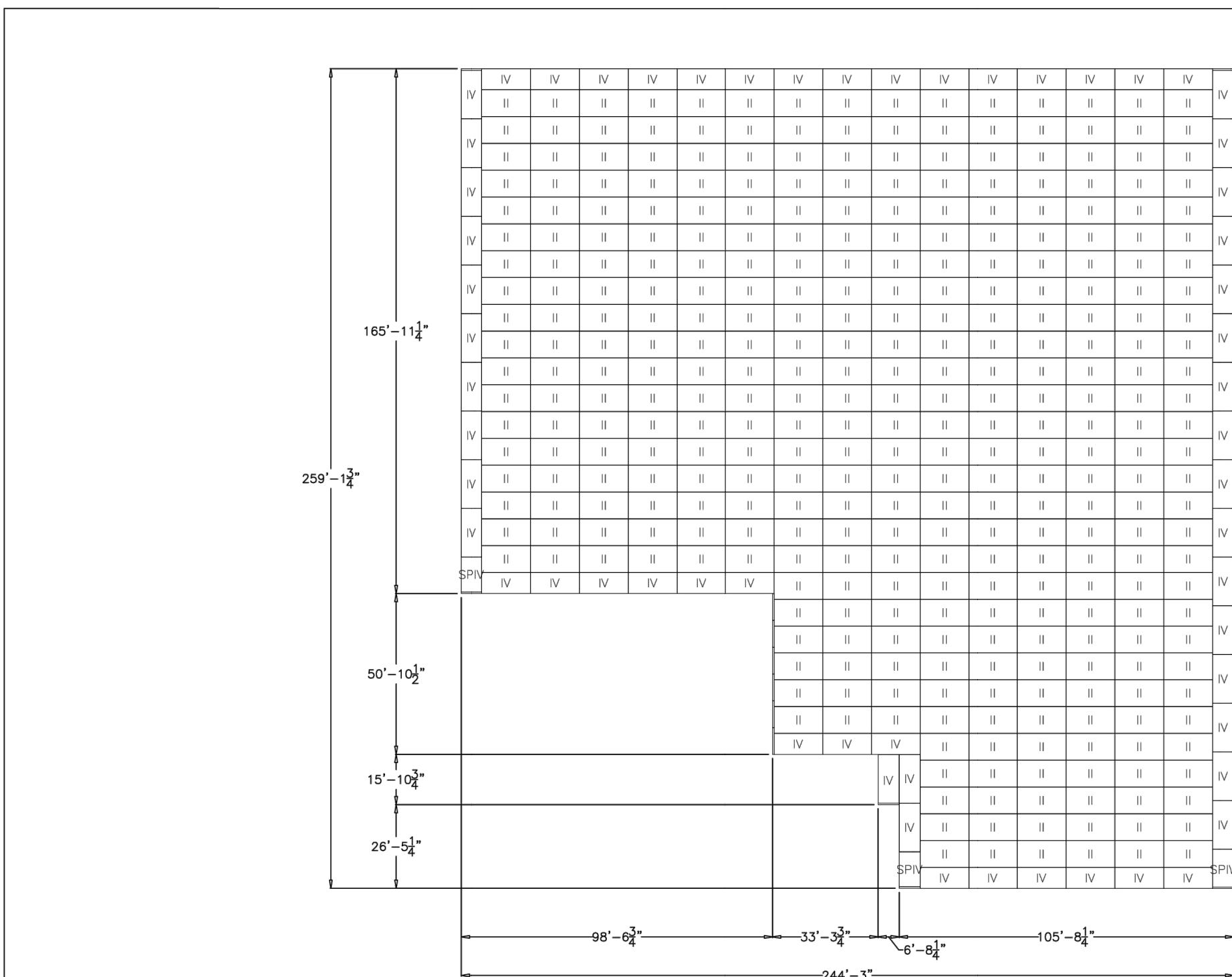
REV	DATE	ISSUED FOR:	OWN BY:
Δ	12/5/2022	PRELIMINARY	RAL

SCALE:
NTS

SHEET TITLE:
SINGLETRAP LAYOUT DETAILS

SHEET NUMBER:
2.0

SEE SHEET 2.1
FOR LAYOUT



StormTrap
1287 WINDHAM PARKWAY
ROSEMILLE, IL 60446
P815-941-4549 / F331-318-5347

ENGINEER INFORMATION:
Q3 CONSULTING
27042 TOWNE CENTER DR
#110
FOOTHILL RANCH, CA
949-259-6770

PROJECT INFORMATION:
SATICOY PARK

VENTURA, CA
CURRENT ISSUE DATE:
12/5/2022
ISSUED FOR:
PRELIMINARY

REV	DATE	ISSUED FOR:	OWN BY:
Δ	12/5/2022	PRELIMINARY	RAL

SCALE:
NTS

SHEET TITLE:
SINGLETRAP LAYOUT DETAILS

SHEET NUMBER:
2.1

7
8 DETENTION CHAMBER DETAIL OR APPROVED EQUIVALENT

NTS

30% DESIGN
NOT FOR CONSTRUCTION



REVISION	DESCRIPTION	APP.	DATE
Δ	ISSUED FOR FEASIBILITY STUDY		12-19-22

PREPARED BY:
Q3 Consulting
27042 TOWNE CENTRE DRIVE, SUITE 110
FOOTHILL RANCH, CA 92610
949-259-6770

DESIGNED	DATE	WATERSHED PROJECT MANAGER	DATE
CT			
DRAWN	DATE	WATERSHED DEPUTY DIRECTOR	DATE
CT			
CHECKED	DATE	WATERSHED DIRECTOR	DATE
RC			

VENTURA COUNTY
PUBLIC WORKS AGENCY
WATERSHED PROTECTION

SPEC. NO.	N/A
PROJ. NO.	N/A

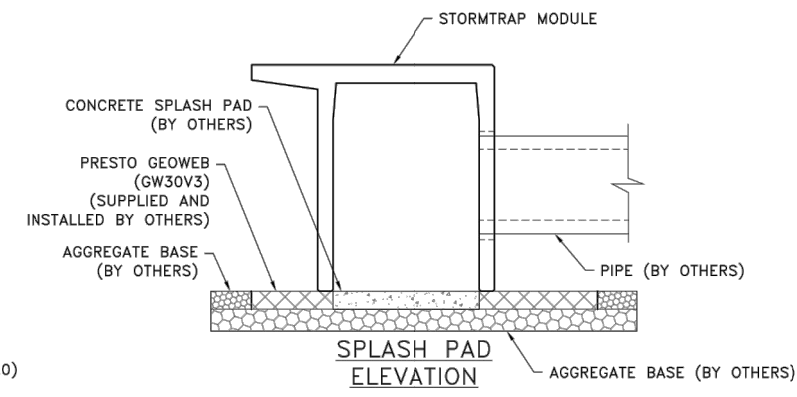
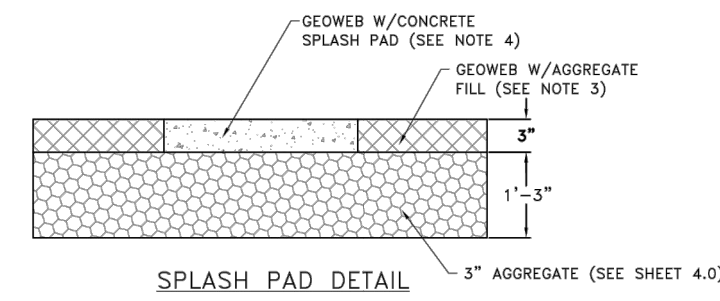
SATICOY PARK STORMWATER CAPTURE AND
GROUNDWATER RECHARGE
DETAILS

SHEET	8
OF	10
DRAWING NO.	WP-??-???

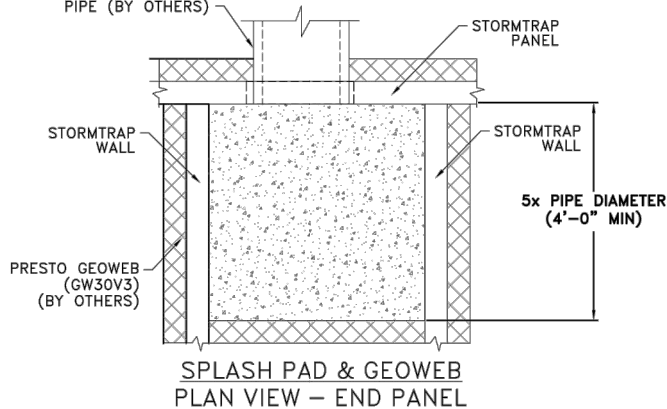
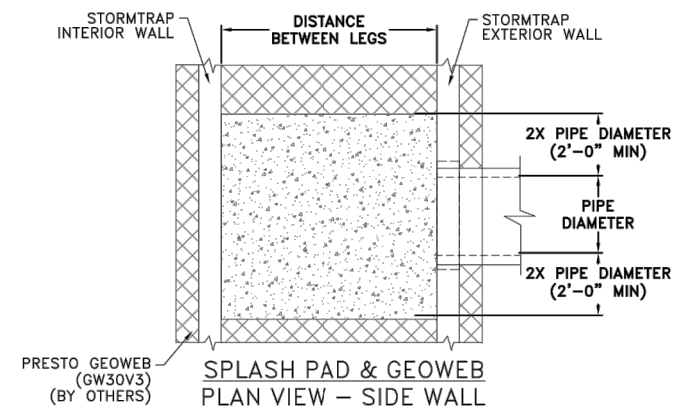
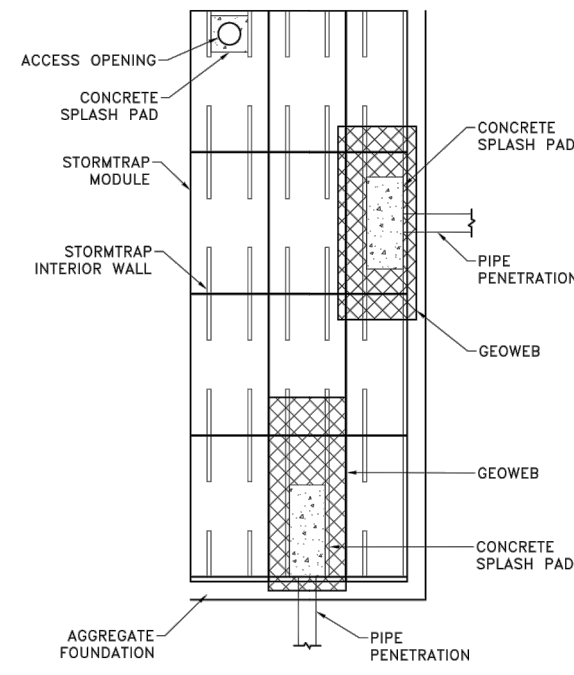
PLOT DATE: 12/17/22

N:\40,085,000\DLV\PLANS\MP\SD\SATICOY\085-DETAILS.DWG PLOTTED: Dec 17, 2022 - 2:00pm BY: CANDACE TONG

- NOTES:**
1. THE APPROVED GEOWEB SHALL BE PRESTO GEOWEB (GW30V3). THE GEOWEB NOMINAL DIMENSIONS SHALL BE 3'-7" x 23'-11".
 2. THE CONCRETE SPLASH PAD AND GEOWEB SHALL BE INSTALLED PRIOR TO INSTALLATION OF THE STORMTRAP MODULES.
 3. THE GEOWEB INFILL MATERIAL SHALL BE #5 AGGREGATE.
 4. THE CONCRETE SPLASH PAD SHALL BE INSTALLED WITHIN THE GEOWEB AND IS REQUIRED AT ALL PIPE ENTRY LOCATIONS.
 5. THE GEOWEB EDGE SHALL BE INSTALLED 1'-11" BEYOND THE OUTER PERIMETER OF THE STORMTRAP SYSTEM.
 6. THE GEOWEB LONGITUDINAL DIMENSION (23'-11") SHALL BE INSTALLED PARALLEL TO THE STORMTRAP LEGS.
 7. THE CONCRETE SPLASH PAD AND GEOWEB SHALL BE CENTERED AT THE PIPE PENETRATION.
 8. REFER TO SPLASH PAD LAYOUT FOR CONCRETE SPLASH PAD DIMENSIONS.
 9. IF ANY PRODUCT OTHER THAN PRESTO GEOWEB IS TO BE INSTALLED, THE PRODUCT MANUFACTURER IS REQUIRED TO SUBMIT A LETTER STATING THAT THE PRODUCT IS EQUAL OR BETTER THAN PRESTO GEOWEB, BOTH IN PERFORMANCE AND IN STRUCTURAL CAPACITY.
 10. ALL GEOWEB AND SPLASH PADS TO BE SUPPLIED AND INSTALLED BY CONTRACTOR.
 11. A CONCRETE SPLASH PAD IS REQUIRED AT ANY ACCESS OPENING THAT HAS AN OPEN GATE FOR DRAINAGE. THE CONCRETE SPLASH PAD SHALL EXTEND BETWEEN THE UNIT LEG WALLS AND 3'-0" FROM THE CENTERLINE OF THE OPENING ON BOTH SIDES UNLESS SPECIFIED OTHERWISE ON THE SPLASH PAD LAYOUT. GEOWEB IS NOT REQUIRED UNDER ACCESS OPENINGS.



SPLASH PAD CONFIGURATION



StormTrap
 1207 HINCHAM PARKWAY
 ROMEVILLE, IL 60446
 P.815-841-6548 / F.331-318-5347

ENGINEER INFORMATION:
 Q3 CONSULTING
 27042 TOWNE CENTER DR
 #110
 FOOTHILL RANCH, CA
 949-259-6770

PROJECT INFORMATION:
 SATICOY PARK
 VENTURA, CA
 CURRENT ISSUE DATE:
 12/5/2022
 ISSUED FOR:
 PRELIMINARY

REV. DATE: ISSUED FOR: DWN BY:

SCALE:
 NTS

SHEET TITLE:
 SPLASH PAD & GEOWEB DETAILS

SHEET NUMBER:
 6.0

NOTE:
 • NEMA 4X RATED / UL LISTED / IP66
 • DOUBLE DOOR ENCLOSURE/14GA 316 SS CONSTRUCTION
 • 12GA CS BACKPANEL, POWDER COATED WHITE
 • DEFEATER HANDLE/ PLANO HINGE/
 • LARGE PRINT POCKET/CENTER POST

UNLESS OTHERWISE SPECIFIED (DIMENSIONS ARE IN INCHES) SURFACE FINISH TOLERANCES: LINEAR +/- .010 ANGULAR +/- 1.0	FINISH	SEAM AND DRIP EDGES	DO NOT SCALE DRAWING	REVISION
NAME	SIGNATURE	DATE		
TITLE			E-COMMERCE 60" x 48" x 12" NEMA 4X FABRICATION	
MATERIAL: 304 SS			DWG NO. N60HS4812S36WPFM3PT	A3
WEIGHT:			SCALE:AS	SHEET 1 OF 4

8 10 ELECTRICAL ENCLOSURE DETAIL OR APPROVED EQUIVALENT

NOTES:
 1. OPENING LOCATIONS AND SHAPES MAY VARY.
 2. SP - INDICATES A MODULE WITH MODIFICATIONS.
 3. P - INDICATES A MODULE WITH A PANEL ATTACHMENT.
 4. POCKET WINDOW OPENINGS ARE OPTIONAL.

7 10 DETENTION CHAMBER DETAIL OR APPROVED EQUIVALENT
 NTS

7.0

StormTrap
 1207 HINCHAM PARKWAY
 ROMEVILLE, IL 60446
 P.815-841-6548 / F.331-318-5347

ENGINEER INFORMATION:
 Q3 CONSULTING
 27042 TOWNE CENTER DR
 #110
 FOOTHILL RANCH, CA
 949-259-6770

PROJECT INFORMATION:
 SATICOY PARK
 VENTURA, CA
 CURRENT ISSUE DATE:
 12/5/2022
 ISSUED FOR:
 PRELIMINARY

REV. DATE: ISSUED FOR: DWN BY:

SCALE:
 NTS

SHEET TITLE:
 SINGLETRAP MODULE TYPES

SHEET NUMBER:
 7.0

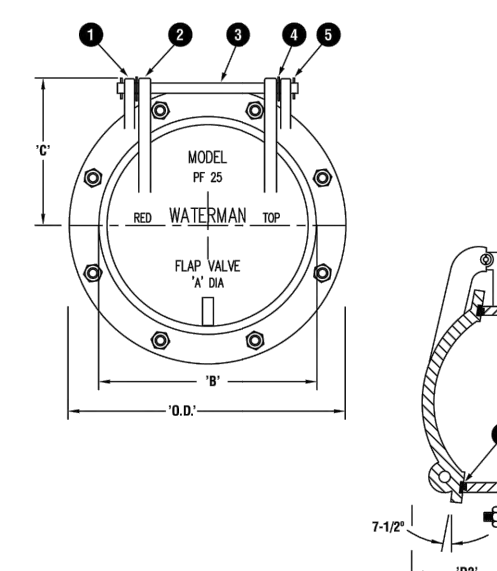
WATERMAN VALVE
PF-25 FLAP VALVE
 SIZES 4" TO 24", FLANGE OR WALL MOUNTING, FOR DRAINAGE OR PUMP DISCHARGE

- FEATURES**
- Suitable for 25-foot seating head
 - 7.5-degree angle ensures positive closure
 - ANSI 125# flanged connection
 - Iron cover with neoprene seat
- OPTIONS**
- Counterweight options - consult factory

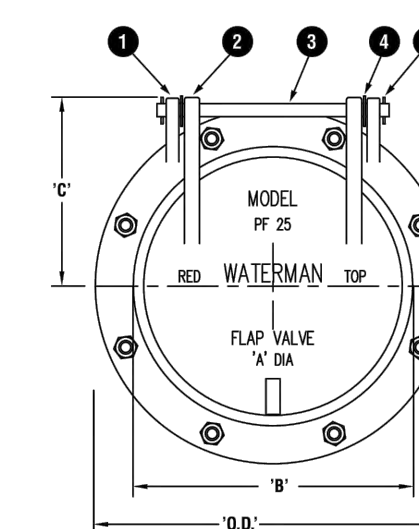


MATERIALS OF CONSTRUCTION

Number	Name	Material
1	Frame	Cast Iron ASTM A126 Class B
2	Cover	Cast Iron ASTM A126 Class B
3	Hinge Pin	Stainless Steel 316
4	Washer	Stainless Steel 316
5	Spring Pin	Stainless Steel 316
6	Seat	Neoprene ASTM D-2000



WATERMAN VALVE
PF-25 FLAP VALVE
 SIZES 4" TO 24", FLANGE OR WALL MOUNTING, FOR DRAINAGE OR PUMP DISCHARGE



DIMENSIONS FOR FLANGE BACK

Size	C	D2	O.D.
4	4 5/8	6 1/4	9
6	5 11/16	7 5/8	11
8	6 7/8	8	13 1/2
10	8 1/8	8	16
12	9 3/8	8 1/2	19
14	10 7/16	10 1/2	21
16	11 5/8	10 1/2	23 1/2
18	12 1/8	10 1/2	25
20	13 3/8	11	27 1/2
24	15 1/2	11	32

PARTS LIST

Number	Name
1	Frame
2	Cover
3	Hinge Pin
4	Washer
5	Spring Pin
6	Seat

Waterman WATERMAN VALVE LLC
 25500 Road 204, Exeter, CA 93221 www.WatermanUSA.com 800.331.0808



Waterman WATERMAN VALVE LLC
 25500 Road 204, Exeter, CA 93221 www.WatermanUSA.com 800.331.0808



9 10 FLAP VALVE DETAIL OR APPROVED EQUIVALENT
 NTS

30% DESIGN NOT FOR CONSTRUCTION



D				PREPARED BY:	CT	DESIGNED	WATERSHED PROJECT MANAGER	DATE
C				 Q3 Consulting 27042 TOWNE CENTRE DRIVE, SUITE 110 FOOTHILL RANCH, CA 92610 949-259-6770	CT	DRAWN	WATERSHED DEPUTY DIRECTOR	DATE
B					RC	CHECKED	WATERSHED DIRECTOR	DATE
A	ISSUED FOR FEASIBILITY STUDY		12-19-22					
△	REVISION	DESCRIPTION	APP.	DATE				

VENTURA COUNTY PUBLIC WORKS AGENCY WATERSHED PROTECTION

SPEC. NO. N/A
 PROJ. NO. N/A

SATICOY PARK STORMWATER CAPTURE AND GROUNDWATER RECHARGE
 DETAILS

SHEET 10 OF 10
 DRAWING NO. WP-??-???